

The Katahdin Hairald

Quarterly Newsletter of Katahdin Hair Sheep International



Volume 35, No. 2

www.katahdins.org

Spring 2023



Welcome New Members

December 1, 2022
- February 28, 2023

New Youth Members

Hallie Brinkerhoff
Timothy David
Guy Deal
Margaret Deal
Bella Dunaway
Miriam Fox
Nolan Harrelson
Ethan Hinton
Elyse Hinton
Paul Jones
Charlotte King
Connor Lenzen
Trae Lillehaugen
Claire Lovenbury
Uriel Francisco Melendez
Mariela Menchaca
Brilea Moffitt
Cheyenne Peterson
Reed Staley

New Voting Members United States

Alabama

John Jeffreys
Jordan Nelson
Mark & Elaine
Tcherneshoff
Brian & Sonya
White

Alaska

TJ Walton

Arizona

Jason Napier

Arkansas

Mitch DeVries

Florida

Lee and Caroline
Wetherington

Georgia

Chris Gaither
Elizabeth Goldau
Dane Law
Matthew
Williams

Idaho

Carol Finney

Illinois

Marvin and
Monica Baier
Robert Eddy
Jeremy Jones

Indiana

Lavern & Leah
Graber
Jason Herrmann
Jonathan
Polanka

Kansas

Brandy Keller

Kentucky

Andrew
Hostetter
Randy and
Rosanna
Detweiler
J. Corey Dixon
Ryan & Mary
Eandi
Amanda and
Russell Owens
Daniel & Regina
Sommers
Michael and Kim
Straub

Louisiana

Ted Reaux

Maine

Rebecca Bunker

Michigan

Mike and Karen
O'Connor

Missouri

Kristy Adams
Darin and Karla
Huitt
Hans Nix
Bethany Prenger
Delbert and
Freida
Swartzentruber

North Dakota

Lexie Meidinger

Ohio

Cynthia Bauman
Crystal Criswell
Mervin S
Hostetler
Charles McQuain
Amy L Traxler

Oklahoma

Brian Lepore
Melisa Newman
Rebecca A
Womack

Oregon

Don Curry
Zach & Callie
Smith
Debora Morgan
& Sean
Starbuck

Pennsylvania

Rudy Byler
Anne Dalvet
Yvonne Ferrante
Leon M Martin
Erika Peterson

Tennessee

Olivia Guthrie
Kelly Myatt
Brant and Lauren
Pippin
Kelly and Amy
Rakes
William Reed
Matt Richardson
Chuck and Gaela
Whitaker
Jeremy Winfrey

Texas

Steven & Noellee
Baca
Michelle Griffith
Francisco
Melendez
Katherine
Murphy
Norman & Janice
Peterson
Kimberly Scott
Dana Wise

Utah

Minchey Farm

Virginia

Jonathan Boone
J. Will Clark
Ronald Conley
Robert Elswick
Seth and Alice
Harden
Emily
Winebarger
Hoss
Phillip and
Jennifer
McClellan
William Payne
David Slempp
Billy Joe Watson
Jr
Corrine and
Matthew
Woods

Washington

Paul & Valerie
Oppenheim

West Virginia

Angela Huffman
Rick and Melody
Richardson

Wisconsin

Ronald L Engelke
Kathryn
McGrath
Debbie Petzel
Anna Smith
June Wilharm

**KHSI Operations • P. O. Box 739, Fowlerville, MI 48836
717-335-8280 ext. 1**

Spring 2023

VOLUME 35 | ISSUE 2



Alan Culham and Cindy DeOrnellis,
Editors
info@katahdins.org

Cheri Haire, *Graphic Designer*
customersvc@xpressionsonline.us

KHSI Operations

Alan Culham
717-335-8280 ext 1 • 717-335-8279 (fax)
PO Box 739 Fowlerville, MI 48836
info@katahdins.org
www.katahdins.org

KHSI Registry

Jeff Ebert, 420A Lincoln St.,
PO Box 231, Wamego, KS 66547
717-335-8280 ext 3 • 785-456-8599(fax)
registry@katahdins.org
www.katahdins.org/register-sheep/

KHSI Board of Directors

President Dan Turner
Vice President Larry Weeks
Secretary Mandy Fletcher
Treasurer Howard Covington
Director Justin Fruechte
Director Karen Kenagy
Director Cindy DeOrnellis

Advertising

Display Ad Rates*: 2023 rates on page 2.
Contact Operations for ad specifications at
717-335-8280 ext 1 or info@katahdins.org.

Classifieds - Classified sale ads for Katahdin
or Katahdin-cross sheep are free to all KHSI
members in the Katahdin Hairald and at the
KHSI website. For the Hairald, limit length to
40 words.

Ad commitment for Summer 2023 Hairald due May 3, 2023

*rates for display advertising are subject to
change upon approval of the Board of Directors.

Ad design available from: Gail Hardy &
Cheri Haire, *Xpressions, Graphics Specialists*
717-335-8280 ext 4 or 479-439-0726
gail@xpressionsonline.us
<https://xpressionsonline.us>

Inside This Issue



Articles

Director's Corner.....	2
ASI-Katahdin Story	3
Minerals, Are Your Sheep Getting Enough?	5
From the Vet: Ringwomb: Causes and Treatments	6
NSIP Katahdin Percentile Report April 2023	8
DNA Submitted for "Genomically Enhanced" Breeding Values Yields Results	9

Coming Events

Katahdin Expo & Sale Goes to Van Wert, OH.....	15
2023 Katahdin Expo Lodging Options	16
2023 All-American Junior Show	17
2023 All-American Jr. Expo Lodging Options	21
Important Dates	28
Educational Events Calendar	29
Katahdin Sale Roundup	29
Focus on Eweth Calendar	29
Leroy Boyd Junior Show June 15	48
Katahdin Expo and Sale 2023 August 10-12	55

KHSI Business

2023 Katahdin Hairald Display Ad Prices & Publication Schedule	2
Searchable Online Membership	8
KHSI Board Meeting Minutes	23
Board of Director Candidates needed!	26
KAT Plus Online Replacement Ewe Sale Rules	31
Hair Coat Inspection is Here	32
KHSI Registry Office Report March 31, 2023	32
KHSI Online Hair Coat Training	32
New Certified KHSI Hair Coat Inspectors	32
KHSI Adds Two New Honorary Members	33
Youth Program Donations	39
KHSI Membership Donations to Support Youth Activities	40
KHSI Preferred Advertising Auction Results	47
Regional Katahdin Groups	56

Regular Features

Welcome New Members.....	inside front cover
Here's How I Do It: "Death Loss"	43
RMKA to Host 2 Events in 2023	48
Focus on Ewe-th: 2023 KHSI Youth Scholarship Deadline July 1st.....	48
Katahdin Recipe Forum Part 1 Citrus Honey Glazed Lamb Shanks	50
Katahdin Recipe Forum Part 2 Spiced Rack of American Lamb with Citrus Salad	51
KHSI Member's Guide	52
Classified Ads	53
Advertisers Index (listed alphabetically).....	57

Cover: "Peekaboo" - 2022 KHSI Photo Contest submission, Demitrius Daniels

Pictured Above: "She's All Mine" - Karen Kenagy, 2022 KHSI Photo contest Kids & Sheep Division winner

Director's Corner

Dan Turner, KHSI President

We've never been to an ASI (American Sheep Industry) convention before this year, so it was a treat for Jan and I to attend this year in Fort Worth. We joined ASI about the same time that we joined KHSI, but I never thought much about the activities of ASI, as I knew it was geared toward the US wool industry, and well, that's not us. Since it is ASI, and not AWI, the overall goal of the organization should be to promote sheep - which it is. As the US sheep industry is being promoted and strategies are being laid out for the future, the rise in popularity of hair sheep cannot be overlooked.

Another, not so subtle, fact that can't be overlooked, is that the ASI Executive Board now has 2 KHSI members who were elected to serve on the board. Lisa Weeks was reelected this year for Region II and Lynn Fahrmeier was elected to serve Region IV. There are 8 regions and KHSI members are serving in 25% of them. Admittedly ASI gets a good amount of funding from the Wool Trust, so much of the organization is wool-centric. That is not a bad thing, if that funding helps increase the awareness of the US sheep industry. High tides lift all boats, and hopefully momentum is gained enough that the sheep meat industry soon rivals the wool aspect.

There were over 420 attendees at the convention. At least 20 were KHSI members and I understand that this was 3-4 times more than normal. I've always wanted to go and as President of KHSI, it was the right thing to do. I was quite pleased that in almost every session I attended, the word "Katahdin" was mentioned in some positive way. Wow, we've come a long way. Some of the 51 presentations at the

convention covered genetic improvement, NSIP, resource management, Cache Valley Fever, upcoming drug laws, electronic identification, ALB (American Lamb Board), lamb grading and the lamb market outlook. The presentations were top-notch, though just as important are the topics covered in the question & answer periods of the presentations. Another highlight for KHSI was that Jim Morgan received a special recognition award during the Genetics Forum. Jim was promoting sheep genetics long before it was in vogue to do so. Jim also serves ASI as the Katahdin representative to the Genetic Stakeholders Committee.

Along with presentations were tours, dinners, receptions and a "trade show". KHSI was the only breed association to have a table display at the trade show. That seems a bit ironic, a hair breed being the only one displaying at ASI. There are several reasons why it was important for KHSI to do this. We are obviously getting noticed by ASI and it is good to show support for our members who serve on ASI. Not everyone raising wool sheep will keep doing this as they get older and as wool prices may decline further; but they want to raise sheep - we want to be there for them. Being in Texas, this was important for Katahdins to stand out, as Katahdins have a huge opportunity there.

I would like to say thanks to all those who attended and especially those that are making it a priority to serve the ASI board and committees. I was able to meet new people, make some good contacts and learn a lot of good info. I now have a wider network of contacts for information that I will someday reach out to, or at least spend time with next year in Denver.

But before Denver, I'm really looking forward to seeing all of you in Van Wert, Ohio!



2023 Katahdin Hairald Display Ad Prices & Publication Schedule

Ad Size	Member Sheep Ads Cost - Color Ad	Commercial Advertisers Cost - Color Ad
full page	\$250	\$330
1/2 page	\$130	\$175
1/4 page	\$70	\$90
1/8 page (business card)	\$45	\$55

2023 Hairald Publication Schedule

	Summer	Fall
Display Ad commitment due (inc. ad size)	May 3	Sept 6
Articles deadline	May 8	Sept 12
Display Ad content due to Xpressions	May 12	Sept 15
Classified Ads due to Operations	May 19	Sept 22
Mailing Date (Bulk Mail)	Jun 23	Oct 27

- Advertisers who agree to advertise in 4 consecutive issues receive a 10% discount on each ad.
- The prices listed in the table above are for finished ad copy. It is the responsibility of each advertiser to either produce the final copy themselves or contract for that.

ASI-Katahdin Story



AMERICAN SHEEP INDUSTRY ASSOCIATION
YOUR INDUSTRY ADVOCATE SINCE 1865

by Kyle Partain – ASI Sheep Industry
News Editor

As a hair sheep producer, you might wonder if you really need to be a member of the American Sheep Industry Association. After all, ASI is funded – in part – by the Wool Trust and empowered by those funds to market American wool both domestically and internationally.

With no wool to sell, what value does ASI hold for you and the Katahdin breed? After all, a percentage of your sales are already contributing to the American Lamb Board, which is the national checkoff program that operates separately from ASI. But did you know that as a national checkoff program, ALB is legally prohibited from lobbying on the industry's behalf?

Maybe you wonder about the importance of such lobbying efforts. Unlike beef or pork, lamb packages at grocery stores must be labeled for country of origin. This is mandatory and enforced by the U.S. Department

of Agriculture due to the efforts of ASI in the 2014 Farm Bill. Alone among livestock interests, ASI secured this mandate through the United States Congress. Sheep leaders also secured mandatory price reporting of lamb and are actively working to re-authorize that federal legislation this year. Imagine if lamb companies were allowed to pick and choose whether or what to report to USDA regarding purchases and sales. The sheep industry is also a leader in disease eradication and animal identification, with ASI establishing the No. 1 scrapie eradication program in the world. Our industry has nearly accomplished this goal, which cannot be said for any other sheep producing country in North America.

Or maybe you collected a portion of the \$156 million in Coronavirus Food Assistance Program funds that were made available to American sheep producers in the wake of the COVID-19 pandemic. ASI was at the forefront of providing USDA with the

documentation of losses at the ranch gate that was necessary for sheep producers to receive compensation from this vital program. But the work didn't stop when the CFAP program was announced. Originally, USDA planned to cover losses only on sheep 2 years of age and younger. But ASI and its state affiliates went back to USDA with additional information in early summer of 2020 and the department agreed to cover all sheep under the first round of CFAP funding. A second round of CFAP funding was announced in the fall of 2020 and covered all sheep.

While CFAP funding can help put a monetary value on ASI's influence on behalf of the entire American sheep industry, it pales in comparison to the organization's value as a uniter of the industry.

"The value for me is being a part of the industry, and that's bigger than just my breed," said Lisa Weeks of Virginia, who is one of two Katahdin producers currently on the ASI Executive Board. "ASI gives our industry a seat at the table for our lobbying efforts."

For many producers – especially those with flocks of 200 ewes or less – the biggest value might be that in most states you become an ASI member by joining your state sheep association. And membership at the state level provides producers with access to an abundance of local resources and information.

"I've absolutely benefitted from my involvement with the Pennsylvania Sheep and Wool Growers Association," said Katahdin Hair Sheep International President Dan Turner, who attended his first ASI Annual Convention this year in Fort Worth, Texas. "I've met a lot of people and participated in countless programs in the state that have been very valuable to my operation. These state associations can provide education and experience geared toward your location."

"The reason I joined ASI is because I believe you should join the association that represents your industry,"

CONTINUED ON PG 4

**Check out our
Online Auction
May 24th, 2023
www.PLAuctions.live**

Registered Katahdins bred to perform in a variety of production systems.
Selecting for prolificacy, growth & parasite resistance.

ZIM

Kenneth Zimmerman
Cantril Iowa
(641) 799-0302
kennethlorelle@gmail.com



Turner continued. "Like some producers, there were times I felt like ASI was more geared toward wool. But I was impressed by how many Katahdin breeders I met at the convention this year. And now that I've been to the convention, I see that nobody has all of the answers to our problems. We need to work together, because we all want to see the sheep industry succeed."

Missouri Katahdin producer Lynn Fahrmeier was elected to the ASI Executive Board in January in Fort Worth and has been a longtime member of the association. As a first-generation sheep producer, he's always been open to working with any and all industry groups that could help his own operation thrive.

"Whether we raise wool sheep or hair sheep, we need ASI fighting for all of us," he said. "ASI is the political arm that represents everyone in our industry. ALB can't do that, but ASI can."

ASI also leads the push for Section 32 purchases of American lamb by USDA. At ASI's request, USDA has made several such purchases in recent years to help alleviate a backlog of frozen product. Such purchases reduce inventory and support the price of American lamb.

But ASI offers more than just lobbying to the industry. The ASI Annual Convention is the yearly gathering place for the entire industry, from the American Lamb Board to the National Sheep Industry Improvement Center to the National Sheep Improvement Program. And ASI had a hand in the creation of each of these industry advocates.

More so than producers in nearly any other American breed, Katahdin

producers have jumped on the genetics bandwagon that really took off through Let's Grow grants from ASI in the past decade. Those grants were a starting point for today's Sheep GEMS project headed by Dr. Ron Lewis of the University of Nebraska-Lincoln, and Katahdins are a major focus of the project. A huge involvement by the breed in NSIP and the fact that Katahdins are raised at three USDA Agricultural Research Stations - the U.S. Sheep Experiment Station, the U.S. Meat Animal Research Center and the Dale Bumpers Small Farms Research Center - that are now collaborating their sheep research efforts made the breed an ideal fit for the project.

The USSES might not even exist in 2023 had it not been for ASI's steady influence in getting the station removed from the government's closure list - a goal that was achieved in 2019.

ASI has also proven itself a leader in industry education through the annual convention, online webinars and materials available for download from SheepUSA.org. Educational programs and materials include:

- Sheep Safety and Quality Assurance.
- Secure Sheep and Wool Supply Plan.
- Sheep Production Handbook.
- Sheep Care Guide.
- Targeted Grazing Handbook (update coming soon).
- ASI's Research Update podcast.
- Sheep Industry News magazine.

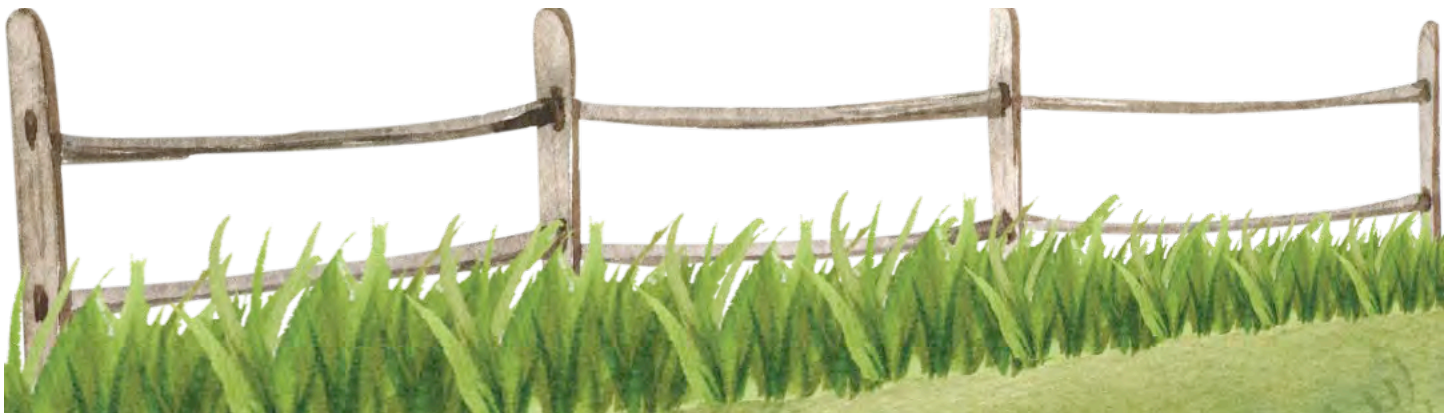
In addition, ASI has worked collaboratively with USDA on the National Scrapie Eradication Program,

as well as with the Food and Drug Administration's Center for Veterinarian Medicine seeking approval of new drugs and dewormers for use in sheep. And as USDA looks to move livestock industries into the realm of electronic identification, ASI has worked to develop a transition program that will accommodate the best interests of the industry if/when the federal government moves forward.

"KHSI has always been very education focused because a lot of our producers are first-time sheep producers and first-time farmers," Fahrmeier said. "They're buying Katahdins and need education on how to feed and raise these sheep. And ASI has a lot of materials that can be very useful for general sheep health and nutrition."

Finally, there's strength in numbers - which supports industry infrastructure that benefits all producers. As the domestic sheep flock continues to decline and the industry faces increased competition from imported lamb, we must come together as one voice for the betterment of all American sheep producers. And ASI - and its forerunner organizations the American Sheep Producers Council and the National Wool Growers Association - have been that united voice for nearly 160 years.

As the oldest national livestock organization in the United States, ASI has always put the interests of the American sheep producer front and center. But the association can't continue to do that without involvement from the entirety of the American sheep industry. So, whether you're producing Katahdins or Rambouillets, Dorpers or Targhees, there's a place - and a need - for you at ASI.



MINERALS, ARE YOUR SHEEP GETTING ENOUGH?

by Karen Kenagy

I see a lot of confusion about salt and mineral mixes.

Often people don't understand why their sheep eat a lot of one mix and don't seem to eat much of another.

The main reason is salt content.

Many trace mineral mixes are 75-98% salt so the sheep eat only a small amount which satisfies their hunger for salt. These mixes usually are low cost.

The higher cost mixes have more minerals and vitamins plus feed additives such as molasses or DSG that sheep love to encourage consumption of the less palliative minerals. These mixes contain only 10-20% salt and they're very tasty so sheep eat a lot more of them. They're also quite expensive compared to the mixes with a lot of salt. Almost all contain selenium which is lacking in the soils of much of the country.

The one mineral that sheep can self-regulate is salt. They crave it and seek it out but won't eat too much of it. The feed industry uses this craving, they combine minerals that sheep may not like with salt in the right amounts to make sure sheep get the important minerals they need, such as selenium to prevent white muscle disease. Lack of selenium also contributes to poor health and any problem can worsen when sheep are selenium deficit.

When feeding the more costly minerals people often supply a plain salt lick to save money. In his classes and books Woody Lane, PhD, calls this Double Trouble. Lick tubs, protein blocks and commercial feeds often contain salt which is another reason sheep may not eat enough of the mineral mix with selenium.

Sheep need a loose mineral, they can't get enough from a block and it's hard on their teeth.

By sending in a small portion of liver when you butcher you can have an analysis done which will tell you

the levels of minerals in the sample. I was surprised to find out that my sheep were low in copper, so I've adjusted the mineral mix I feed, yes, sheep do need some copper.

Your sheep may or may not need the mixes with more additives depending on the rest of their diet. You can also send in samples of hay or pasture for analysis.

I hope this helps you understand why sheep eat a lot of some salt/mineral mixes and very little of others. Think about all the other sources of salt that your sheep may have access to. Sometimes it doesn't take a big change to improve the health and success of you flock.

For more information you can get Woody Lane's book "From the Feed Trough" KRK



Coalfield Sheep Association

2nd Annual Coalfield Hair Sheep Sale

Saturday, August 19 2023 - 1:00 p.m.

Coalfield Agricultural Center

449 Agriculture Drive, Clintwood, VA

Smith Reasor - Auctioneer

Local Lodging in Clintwood: Sleep Inn & Suites

Reservations: (276) 796-1058

Mention Coalfield Sheep Sale for a special rate of \$90/night

Seth Baker, President
(276) 926-8900
seth@sethbakerlaw.com

J. Pete Odle
(276) 525-0727

Dickinson County
Extension Office
Brad Mullins
(276) 926-4605
wmullins@vt.edu

ONLINE BIDDING



Pre-Registration & Pre-Approval Required
Contact: Myles Branch
(336) 583-5725

FIND US ON
FACEBOOK!





From the Vet

Ringwomb: Causes and Treatments

David S. Redwine, DVM

I'm not sure that I ever heard the term "Ringwomb" during my vet school years. But it didn't take long in actual private practice, for me to learn more than I wanted to know about this dreaded sheep problem. Working on small ruminants in rural Virginia during the 80's, and without anyone to ask or rely on, I learned to be decisive and creative in my attempts to save my patients.

The term is actually a misnomer, with the "womb" or uterus, actually normal in these ewes. Ringwomb refers to the lack of, or incomplete dilation of the cervix, or birth canal, in ewes and ewe lambs. It occurs as a result of the failure of the cervix to respond to the hormone change responsible for delivery, or a lack of these hormones at all in the ewe. The latter condition can result in ewe going past their due date by a week or more. While it can happen to all ages of ewes, I personally have seen it mostly in ewe lambs and young adult ewes.

The most common initial symptom

involves the presence of fetal membranes hanging from the vulva, with no contractions or delivery of lambs within two hours. Examination of the ewe reveals a birth canal that is only open large enough to get one or two fingers through. There may or may not be rupture of the amniotic sac, and loss of fluid, which mandates the delivery of lambs if they are expected to survive.

Once a diagnosis is made, owners must quickly make a decision on treatment based on a number of factors. Willingness to invest in a C-section, availability of an experienced veterinarian, value of the lambs and ewe, and predicted outcome, all factor into the decision.

I will cover three possible approaches used in my practice. C-section of the ewe yields the best possibility of both lives lambs, and the ewe. It should be done as soon as possible, to avoid death of lambs, and requires a larger investment.

The second and most common treatment involves manual dilation of the cervix by gently stretching it with your fingers. This may take several hours for the tissue to soften and relax, and you risk tearing the birth canal and damaging or killing the ewe by hemorrhage. Women seem to be the best midwives as their hands are smaller and they

have better dexterity in their fingers. Most Katahdin lambs can be delivered through a cervix large enough to pass a human hand through.

The third treatment option is reserved for situations where the lambs are dead, or the primary goal is to save the adult ewe. I have had success with injecting ewes with a combination of Dexamethasone, Lutalyse, and Oxytocin (two mls of each) and rechecking the ewe in 24 hours. Most of these ewes can be successfully relieved, with little or no manual dilation, but the lambs are usually dead by the time they are delivered.

Ewes should receive Banamine and antibiotics postpartum, and may require supportive care for a few days. Surprisingly, I have found these ewes to deliver normally during following years, and go on to lead productive lives. Hopefully this article will help you recognize this problem, and make decisions that will best benefit your animals and your program. Good luck!

Lazy B Livestock, LLC

Join us on Facebook: [Lazybfamily](#)

Howard & Jennifer Brown
405-567-5163 • 405-567-2559

8362 NS 3550 Rd.
Prague, OK 74864

Generations of selection for:

- Maternal Ability
- Fertility
- Parasite Resistance

**BREEDING
FUNCTIONAL
KATAHDINS SINCE
1992**

Bob & Amanda Nusbaum
6373 Red Dog Rd.
Potosi, WI 53820

608-348-3284 or 608-778-3140
nusbaum@uwplatt.edu

**BoNus
Angus Farm**

We had over 100 lambs born in January and February sired by these rams



RIV 974 (819)
"Party Mode"



LY 088
"Long Island"



ZM 8044
(NSIP 8049)

Exhibited the Reserve Champion All Other Meat Breeds Ram and Ewe and was named Champion Breeders Flock at The 2021 Ohio State Fair



BLZ 147



SHU 4448
"White Christmas"



BMS 030

When starting the flock in 2011 we both worked regular full time jobs so a focus on sheep that worked for us and not the other way around was a must. We still select for this today and cull animals that cannot perform in our generally hands off system. We also enjoy watching our animals when in the barn daily so it is important that they maintain eye appeal and correctness along with the production. We have had great success exhibiting at The Ohio State and Hartford Independent Fairs. We look forward to getting out to more shows and sales in the future.

Weight data will be collected on these lambs for submission to NSIP and we will have a limited number available for sale off the farm this summer.

We also have a great group of yearling rams available on the farm and for consignment to the EAPK and EXPO sales in 2023.

Our ewe flock has been built with ewes selected from BAG, BET, CAG, BMS, ELR, LLG, SHU, SRS, TRB, WHK and the ULRY ewes upgraded from our original commercial flock.



The Ulrys

**Daniel, Marta, Floyd, Eustace, Orville,
Mildred and Millicent**

8800 Johnstown Utica Rd., Johnstown, Ohio

Daniel's Cell: 614-361-0884

Email: Ulry.6@osu.edu

ulryfarms.com



KHSI Prefix ULRY
NSIP Flock# 240262



FIND US ON FACEBOOK:
ULRYFARMSLLC

NSIP Katahdin Percentile Report April 2023

2022-2023 born lambs with genetic linkages

Percentile	BWT	MWWT	WWT	PWWT	PFAT	PEMD	WFEC	PFEC	PSC	NLB	NLW	US Hair Index	YWT	HWT	MBWT	SRCS Index
100	1.16	2.76	5.44	8.68	-2.18	2.2	-99.89	-100.85	0	0.49	0.41	107.57	9.08	0	0.76	139.14
99	0.68	1.78	3.6	6.71	-1.42	1.25	-93.83	-98.96	0	0.31	0.28	105.52	6.52	0	0.54	130.05
98	0.64	1.64	3.41	6.34	-1.19	1.07	-91.4	-97.49	0	0.27	0.25	105.15	6.01	0	0.5	128.3
97	0.6	1.56	3.25	6.08	-1.01	0.93	-88.53	-95.82	0	0.24	0.23	104.9	5.69	0	0.47	127.13
96	0.57	1.52	3.15	5.89	-0.94	0.83	-85.88	-94.35	0	0.23	0.22	104.72	5.44	0	0.45	126.32
95	0.55	1.49	3.08	5.71	-0.86	0.77	-83.59	-91.74	0	0.22	0.21	104.59	5.25	0	0.43	125.53
90	0.49	1.31	2.81	5.09	-0.62	0.55	-73.37	-82.65	0	0.18	0.19	104.15	4.53	0	0.36	123.35
85	0.44	1.16	2.62	4.67	-0.45	0.43	-66	-75.16	0	0.16	0.17	103.85	3.97	0	0.32	121.94
80	0.4	1.05	2.45	4.33	-0.32	0.32	-59.42	-68.46	0	0.14	0.16	103.62	3.6	0	0.28	120.86
75	0.36	0.95	2.31	4.04	-0.21	0.24	-54.48	-60.66	0	0.13	0.15	103.44	3.26	0	0.24	119.74
70	0.33	0.87	2.17	3.78	-0.13	0.17	-49.35	-53.97	0	0.12	0.14	103.25	2.99	0	0.21	118.77
60	0.28	0.73	1.91	3.32	0	0.06	-40.66	-39.59	0	0.1	0.12	102.9	2.48	0	0.16	116.92
50	0.23	0.58	1.65	2.87	0.14	0	-32.27	-26.8	0	0.08	0.11	102.53	1.93	0	0.11	115.08
40	0.17	0.43	1.4	2.41	0.29	-0.08	-23.46	-14.36	0	0.06	0.09	102.22	1.3	0	0.04	113.3
30	0.12	0.23	1.14	1.93	0.44	-0.19	-12.1	0	0	0.04	0.08	101.86	0.4	0	0	111.46
20	0.06	0	0.85	1.38	0.6	-0.34	0	10.93	0	0.02	0.06	101.47	0	0	-0.01	109.22
10	-0.02	0	0.43	0.58	0.89	-0.53	16.95	37.24	0	-0.01	0.03	100.96	0	0	-0.09	106.11
0	-0.46	-1.12	-1.65	-2.83	3.74	-1.7	209.95	230.5	0	-0.17	-0.08	99.04	-4.81	0	-0.55	91.58
Units	kg	kg	kg	kg	mm	mm	%	%	cm	%	%		kg	kg	kg	
Number of Lambs	7226	7226	7226	7226	1836	1836	4072	4072	0	6982	6982	7226	7226	0	7226	7069

Category	Count
Total Katahdin Records	109445
2022-2023 Born Lambs	8581
2022-2023 Lambs with Linkages	8344
2022-2023 Born Ram Lambs	4099
2022-2023 Born Ewe Lambs	4482

America's
GENETIC FOUNDATION
FOR A PROFITABLE

Sheep
INDUSTRY



Searchable online membership directory



https://www.katahdin-pedigrees.org/public/members_p.php



Submitted through NSIP for "Genomically Enhanced" Breeding Values yields results for the following genetic conditions.

Scrapie Susceptibility			Genetic Conditions Results Key
Codon 136	Codon 171	Description	
AA	RR	Complete Resistance	<p>Scrapie is a degenerative disease affecting the central nervous system, which can be debilitating to a flock. Once an animal is infected there is no treatment. Infected animals typically do not show symptoms until two to five years after the initial infection. After the onset of symptoms, animals tend to live only one to six more months. Symptoms include nervousness or aggression, obsessive rubbing, incoordination, and tremors. Because of the delay between infection and onset, control of this disease within a flock by signs and symptoms alone is ineffective.</p> <p>The ability to manage a flock using genetics has made it increasingly easier to prevent Scrapie. Two locations on DNA that code for prion protein are particularly important for classical scrapie susceptibility: Codons 136 and 171. Codon 136 codes for the amino acids alanine (A) or valine (V). Codon 171 codes for the amino acids arginine (R), glutamine (Q), histidine (H), or lysine (K). The effects of H and K relative to Q and R at codon 171 on scrapie susceptibility have not been documented. Therefore, for selection purposes, consider them as equivalent to Q.</p> <p>Animals with the AA at Codon 136 and RR at Codon 171 are completely resistant to the disease. This means that while other animals in the flock may have the disease, these animals will never be infected. Any animal with the QQ at Codon 171 will be susceptible to Scrapie, while other codon combinations grant varying levels of partial resistance.</p>
AA	QR	Rarely Susceptible	
AV	QR	Somewhat Susceptible	
VV	QQ*	Susceptible	

*Animals QQ at codon 171, regardless of their genotype at codon 136, are susceptible to scrapie and can transmit the disease to susceptible flock mates.

CONTINUED ON PG 10

PUREBRED, F1 & COMMERCIAL KATAHDIN

MEMBERS OF THE KATAHDIN HAIR SHEEP INTERNATIONAL

ALLEN & ADRIANA RUIZ, METTER, GA
ALLENRUIZRANCH@GMAIL.COM
C: (786) 258-1244

FIND US ON FACEBOOK!

GENETIC CONDITIONS CONTINUED FROM PG 9

OPP Susceptibility (TMEM154)		Description
Diplotype Results	Description	
1, 1 or 4, 4 or 1, 4	Less Susceptible (desirable)	<p>Ovine Progressive Pneumonia (OPP; also known as Maedi Visna outside the US) is an infectious disease of sheep caused by the OPP virus, a very slow growing Small Ruminant Lentivirus. The disease is eventually fatal. The most prevalent signs are general wasting ('thin ewe syndrome'), decreasing milk production ('hard bag syndrome'), and pneumonia unresponsive to treatment, with labored breathing, exercise intolerance and coughing. Symptoms are usually not apparent until later in life so the infection status can only be determined by testing.</p> <p>Depending on the incidence of OPP in the flock, production losses can be significant. There is no known treatment, and no vaccines are available. Variable degrees of natural resistance to infection exist and can be determined by genetic testing (TMEM154 test). Selecting replacement breeding animals carrying desirable genotypes can help decrease susceptibility to OPP in the flock.</p> <p>The four most common genetic haplotypes (one inherited from the sire, one from the dam) are denoted 1, 2, 3 and 4. Haplotypes shown to confer less susceptibility are 1 and 4. Therefore, diplotypes 1,1, 1,4 and 4,4 are desirable when selecting animals for breeding, while haplotypes 2 and 3 (even in combination with desirable haplotypes) indicate high susceptibility and are not desirable.</p> <p>We recommend that producers increase the frequency of haplotype 1. If producers have access to replacement animals with haplotype 4, it can be selected at the expense of haplotypes 2 and 3 but not at the expense of haplotype 1. The rationale for the last recommendation is that haplotype 1 was as effective as haplotype 4, yet only one amino acid different from the ancestral protein sequence. Thus, haplotype 1 has the best chance at retaining the natural function of the TMEM154 gene, which is presently unknown.</p> <p>Regardless of TMEM154 diplotype distribution, adult sheep in infected flocks should be periodically tested for antibodies against the virus (serological prevalence) starting with the oldest animals first. A blood test that detects the presence of antibodies against the virus can be used for this (for example ELISA tests from IDEXX or VMRD). A reduction in OPP prevalence can be achieved by simultaneously selecting less susceptible animals for breeding while removing seropositive animals from the flock.</p>
*, 2 or *, 3	Highly Susceptible	
Other haplotypes and their combinations	Unknown	

CONTINUED ON PG 12



EASTERN ALLIANCE
FOR PRODUCTION
Katahdins

3rd Annual
**Symposium
and Sale**



THE EASTERN ALLIANCE FOR PRODUCTION KATAHDINS WILL HOST THE 3RD ANNUAL SYMPOSIUM AND SALE AT THE MOREHEAD UNIVERSITY AGRICULTURAL COMPLEX ON JULY 8TH, 2023.

WE WILL HAVE OUR EDUCATIONAL SESSIONS ON SATURDAY MORNING AND FINISH THE DAY AS OUR ANNUAL SALE CONCLUDES.

MOST ANIMALS IN THE SALE WILL BE ONSITE!

WILLOUGHBY ONLINE SALE

- PROVEN RAMS 2 YR +
- YEARLING RAMS
- YEARLING EWES
- RAM LAMBS
- EWES LAMBS
- PENS OF EWES/LAMBS

July 8, 2023 - Morehead, KY

FOR MORE INFO:
EASTERNALLIANCEKATAHDINS.COM

BAG

BUCKEYE ACRES

ELITE STUDS

BAG



BA 4361



BA 4216



BA 4250

We'll be Offering in 2023 Elite Stud Rams and Ewes like those pictured above. Backed by NSIP data.

Please Join us for our
 ***Buckeye Acres Online Sale*** 
June 7th, 2023

Hosted by: <https://www.Integritylivestocksales.com>

Farm Visitors and sales are always welcome!

www.buckeyeacres.com

Ron and Carla Young
Van Wert, OH 45891

419-203-6389
roncyoung@gmail.com



Member
NSIP

"GENETIC CONDITIONS" CONTINUED FROM PG 10

Myostatin		The function of the normal myostatin gene is to keep muscle growth in check. A mutation in this gene, which originated in Texel sheep, reduces its function with increases in muscle growth and fiber numbers during early fetal development. Each additional copy of the myostatin variant acts in an additive manner by decreasing carcass fat while increasing carcass muscle. Meat quality is not significantly affected. Lambing ease is also not affected in litters with multiple lambs. Moreover, any differences in dystocia were not repeatably detected when US Texel sires were used in terminal crosses with different breeds.
Results	Description	
Noncarrier	No Copies of Mutation	
Carrier	1 Copy of Mutation	
Homozygous Myostatin	2 Copies of Mutation	

Callipyge		The causative mutation for this condition occurred in a single Dorset ram and has dramatic effects on muscle development. The genetic locus was given the descriptive name Callipyge (CLPG), derived from Greek for 'beautiful buttocks'. The phenotype is characterized by extreme muscle development due to hypertrophy during early postnatal (three to eight weeks of age) growth. Despite large effects of this hypertrophy condition on slaughter and carcass composition traits, the associated adverse effects on meat quality traits have deemed this a mutation to eliminate for the good of the US sheep industry. Due to the unusual inheritance of the Callipyge phenotype, it is important to realize the genetic testing will identify the number of copies of the mutation but will not predict the phenotype without additional parental status information. Regardless, the test can be used to eliminate this mutation from the desired populations.
Results	Description	
Noncarrier	No Copies of Mutation	
Carrier	1 Copy of Mutation	
Homozygous CLPG	2 Copies of Mutation	

Booroola FecB	
Results	Description
Noncarrier	No Copies of Mutation
Carrier	1 Copy of Mutation
Homozygous FecB	2 Copies of Mutation

The Booroola fecundity gene (FecB) variant is inherited as a single autosomal locus influencing ovulation rate and litter size. The effect of FecB is additive for ovulation rate. That means for each copy of FecB variant inherited, there will be an increase of about 1.6 corpora lutea per cycle. Multiple researchers identified the causative mutation within the bone morphogenetic protein 1B (BMP-1B) receptor. These teams found that Booroola sheep had a mutation (Q249R) in the highly conserved intracellular kinase signaling domain of the BMP-1B receptor. Selection for multiple copies of this fecundity mutation can cause large increases in ovulation rate and litter size. Such impacts on the existing production system need to be considered before incorporating the FecB mutation into a flock.

INCONCLUSIVE TEST

In some cases, the result of a genotype test will be inconclusive. There are redundancies built into the testing process to validate a test. When there is a level of inconsistency among those redundant tests, the genotype call is less reliable and therefore deemed inconclusive. Such inconsistency can arise from the condition of a tissue sample, the extraction of the DNA from a sample, and the complexity of the chemistry associated with each test. If a test is inconclusive, and a reliable genotype on an animal is needed

CONTINUED ON PG 13





Michael Stumpff
423-505-4274
mstumpff@yahoo.com

Registered Katahdins Since 2007

The Ewes

The Rams

The Lambs
February - March
lambs available in
May-June

Reserve Yours TODAY!



CEDAR CREEK
FARM
GEORGETOWN, TN



"GENETIC CONDITIONS" CONTINUED FROM PG 12

for marketing or selection decisions, a new tissue sample should be collected and submitted for retesting.

**GENETIC CONDITIONS RESULTS
IMPORTANT NOTICE (DISCLAIMER)**

PARENTAGE RESULTS

The parentage results in this report are based on methodology developed by Sheep CRC Ltd and further refined by Sheep Genetics and its service provider (AGBU) which enables allocation of the pedigree of animals from the list of supplied candidate parents.

POLL RESULTS

The Poll test results are a predictive breeding value for poll status that has been based on Sheep CRC Ltd research and data from the Information Nucleus program.

This test is not the direct marker or the actual gene causing poll status, which means that the outcome of the test is not 100% accurate. There is a 3% chance that a "PP" sire will produce horned progeny. However, sires with

the "PP" genotype will produce significantly more offspring with polled status than sires with a "PH" genotype or "HH" genotype.

Animals recorded with Sheep Genetics will also have their poll result included in the Sheep Genetics databases.

**GENETIC CONDITIONS AND
RECESSIVE GENES**

The genetic condition and recessive gene tests are based on published information about Single Nucleotide Polymorphisms responsible for specific conditions.

GENERAL

While the Sheep Genetics, Meat & Livestock Australia Ltd (MLA), Animal Breeding and Genetics Unit (AGBU), and National Sheep Improvement Program (NSIP) have taken all reasonable care to ensure our methodologies are valid and results are accurate, you should be aware that genomic testing and methodologies have inherent inaccuracies which, in some cases, cause inaccuracies in the genomic results and our recommendations.

In addition, the samples and infor-

mation used to prepare this report are obtained from various parties. Neither Sheep Genetics, MLA, AGBU nor NSIP can or do verify this information and any inaccuracies in it will impact the accuracy of the results (e.g., genotypes assigned to the wrong animal can result in misleading results).

Please also be aware that the results and recommendations in this report do not consider your specific business interests and circumstances. You should check these against your/ the breeder's records to verify that any suggested pedigree allocations are possible. You should also make any other relevant inquiries and consider the inherent inaccuracies of genomic testing and methodologies before making decisions concerning your interests or otherwise relying on these reports in any way.

To the extent permitted by law, this report is provided 'as is', and the Sheep Genetics, MLA, AGBU and NSIP expressly exclude all rights, warranties, and guarantees regarding the completeness or accuracy of the information in this report.



KRK KATAHDINS *"Production sheep that show well"*



6400682021KRK577

6400682021KRK577 as yearling, 37 lambs sired and is in the top 2% in Index, MWWT, NLW and is Leading Trait sire. Champion in Oregon & Washington in 2022.

Looking for parasite resistance? Strong maternal traits? Ewes that wean a lot of pounds of lamb? Feet that don't require trimming? More rear end muscling? Longevity?

**200+ LAMBS BORN
IN
2023**



**We do
lambs on
grass**



Triplets

125 Registered Katahdin ewes with solid meat and structure conformation are winners at production and shows.



6400682017KRK377

6400682017KRK377, RR triplet, 124 lambs sired, pictured as a lamb. He's in the top 1% index, 2% in NLW and PWWT and is a Leading Trait sire.



**Member NSIP
OPP neg
Scrapie Export
Certified**



**Grass/Forage Based
Management System**

KRK Katahdins

Hubbard, Oregon • 503-351-6978

krkenagy@hotmail.com • www.krkkatahdins.com



**Join us on
Facebook.
KRK Katahdins**

Kiefer Sheep Farm

CEK



Find us @
Kiefer Farms
- Corgis,
Sheep & Hay

Showcasing our Riviera stud rams this edition! Four of these guys sired our 2022-23 lambs and are going to be used this coming year as well! We've also added an "Equalizer" son - "Moving On" to the flock. We're excited to use him this year!

RIV 850 "Long Fellow"

We've leased this massive stud ram from the Larrick Family (Dry Creek Dorpers/Katahdins). He's thrown some great lambs. Some will be available at this year's sales!



RIV 851

"Long Distance"

Son of Riviera "Long Genes" and sire to "Equalizer". We've kept back a super set of females out of him.

RIV 939

"Mean Gene"

A Riviera "Gunslinger" son - Champion Ram at the 2021 MWSRS and half brother to our Supreme Champion Ewe at the NAILE. We've kept a couple of awesome fall females out of him and we'll be using him a lot more this year!

RIV 937

"Freako"

A Riviera "G-Man" son. Love the way his lambs look. Our NAILE Supreme Champion Ewe - "First Lady" will be bred to this ram, plus many others!

RIV 995

"Moving On"

Our new Riviera stud ram. Sired by "Equalizer" - 2022 Champion Ram at the MWSRS

Chad & Elizabeth Kiefer
10689 State Highway 72
Patton, MO 63662
Elizabeth: 573-944-3498
Chad: 573-712-8940
kiefersheepfarm@gmail.com

We plan to hit the road for the following show/sales. Look for our sheep at:

The Ohio Showcase
MOKATS Online Sale
Midwest Stud Ram Sale
Katahdin Expo
Coalfield Hair Sheep Sale
Midwest Hair Sheep Sale
North American Livestock Expo

Katahdin Expo & Sale Goes to Van Wert, OH

Welcome to Van Wert, OH for the 2023 Katahdin Expo.

It promises to be another huge success. Van Wert is located in northwestern Ohio approximately 77 mi SW of Toledo and 34 mi SE of Fort Wayne, Indiana. The event will be held at the Van Wert County fairgrounds.

Mark your calendars for the 2023 Expo, August 10-12, 2023, in Van Wert Ohio. The Expo committee is developing a program with something for everyone. Thursday's program will feature on-the-farm demonstration of grazing cover crops, a demonstration of Advantage feeders and evaluation of live lambs.

Friday will consist of three tracks of concurrent sessions on a wide variety of topics. Our goal is to have educational session for the beginning and experienced shepherds. Speakers will be Dr. Brady Campbell, Dr. Dave Notter, Christine Gelley, Lynn Fahrmeier,

Bob Hendershot, Dr. Eric Gordon, Alan Culham and Doug Brooks

Expected Topics

- FAMACHA training
- Intro to basic NSIP
- GEMS/Genomics
- Forages & grazing
- Selecting traits using NSIP
- Haircoat inspection training
- Finishing lambs on grass
- Foot health
- Selection lambs for specific markets

markets

- Genotype vs. phenotype
- Solar grazing

Producer Panels:

- 1) Building a breeding program for your market and
- 2) Production a good animal with good numbers

Friday will conclude with the annual KHSI membership meeting, dinner and an ice cream social. The 2023 Expo will conclude with the sale on Saturday at 11:00 AM. Vendors will

be present each day with a variety of small ruminant and livestock products and equipment

Very important that you make your reservations as soon as possible and mentions "Katahdin Sheep" or "sheep expo". They will hold them up till 3 weeks before Expo. You can always cancel your reservation if needed later. Be sure to call each hotel directly for rates not thru online website.

**2023 KATAHDIN EXPO
LODGING OPTIONS
LOCATED ON PAGE 14**



PHILLIPS FAMILY
EST. *Farmstead* 2008
— PENNSYLVANIA —

REGISTERED STOCK

BRED FOR PRODUCTION

BECKY & KEN PHILLIPS
☎ 724-809-1821
✉ pffarmstead@gmail.com
🌐 phillipsfamilyfarmsteadpa.com

NSIP National Sheep Improvement PROGRAM

Follow us on Facebook! Phillips Family Farmstead, Pa.

MISTY OAKS FARM
Forage Based Production

Balanced EBVs focused on

- parasite resistance
- total pounds of lamb weaned per ewe
- growth on pasture

GENOMIC ENHANCED EBVs

Jeff & Kathy Bielek
Wooster, OH • 330-621-2612 (c)
kathy.bielek@gmail.com
www.mistyoakskatahdins.com

Smohalla Acres
RHO Katahdins

Tim Rhodes
Salem, Ohio
Ph: (614) 937-9773
Email: SmohallaAcres@yahoo.com

Find us on Facebook!
Smohalla Acres



2023 Katahdin Expo Lodging Options

Van Wert, OH	
Holiday Inn Express: (419) 238 - 2600	
Located at the intersection of US 30 & US 127. 1.8 miles from Van Wert fairgrounds	
KHSI Rates (ask for KHSI rate)	
One King Bed	Two Queen Beds
\$129.99 + tax	\$129.99 + tax
Block rates good until July 15th or until all rooms in the block are filled.	
Also Available (current rates)	
Two Queen Bed Suite	One King Bed Suite
\$171 + tax	\$168 + tax
Suites include living room with fold out couch	

Comfort Inn (419) 232 - 6040	
ChoiceHotels.com/OH90	
Located at the intersection of US 30 & US 127. 1.8 miles from Van Wert fairgrounds	
KHSI Rates (ask for KHSI rate)	
One King Bed	Two Queen Beds
\$99.99 + tax	\$99.99 + tax
Block rates good until July 15th or until all rooms in the block are filled.	
Non-block Rates	
Two Queen Bed Suite	One King Bed Suite
\$140-\$150 + tax	\$140-\$150 + tax
Suites include living room with fold out couch	
All Rooms Include	
Fitness Room, Hot Breakfast, Indoor Pool, Pet Friendly - \$15 surcharge	

Delphos, OH		
Microtel Inn and Suites		
Located on US 30 near Delphos, OH. 12 miles east of Van Wert		
Expo Rates		
Single Queen	Double Queen	Queen Suite
\$95.00 + tax	\$108.00 + tax	\$128.00 + tax
All Rooms Include		
Continental breakfast, Free wifi, elevator to 2nd floor		

Decatur, IN			
America's Best Value Inn (260) 728 - 2196			
Located on US 27. 18 miles from Van Wert fairgrounds.			
Rates			
Single Queen	Single King	Double Queen	Two Fulls
\$60.00 + tax	\$68.00 + tax	\$72.00 + tax	\$72.00 + tax
Quality Inn (260) 728-4600			
Located on US 27. 18 miles from Van Wert fairgrounds.			
Rates			
Single King	Double Queen	Double Queen Suite	
\$128.00 + tax	\$128.00 + tax	\$181.00 + tax	
Handicapped rooms available			
All rooms non-smoking			
Indoor Pool 9 am to 9 pm			

LILLEHAUGEN FARMS
BROCKET, ND

"Big John" Dyer JDK 224 "Twister" TSF 2129

New stud rams from the Expo

Thank you to all our buyers for a successful 2022
 Luke & Sandi Lillehaugen • Maynard & Dee Lillehaugen
 C—(701) 367-9018 • H—(701) 259-2158
 Email: lillehaugenfarms@gmail.com • lillehaugenfarms.com
 Facebook: @lillehaugenfarms



2023 All-American Junior Show

The 2023 All-American Junior Sheep Show is going to be held at the Alliant Energy Center, Madison, WI from June 29-July 2, 2023. This will be the second time the All American has visited Wisconsin in Madison and we are looking forward to bringing the show back to Dane County where we hosted a very large event six years ago, and are planning on another big one! Whenever the AAJS is centrally located, where folks can come from coast to coast, you can count on it being a great gathering of junior breeding sheep families from all over the country.

The All-American is the premier and largest junior breeding sheep show in the country. The breeds participating this year are: Polled Dorsets-Fitted & Slick Shorn, Horned Dorsets, Dorset Advantage, Hampshires-Fitted & Slick Shorn, Southdowns, Border Leicesters-White & Natural Colored,

Cheviots, Cotswolds, Shropshires, Oxford, Montadales, Romneys-White & Natural Colored, Shetlands, Lincoln-White & Natural Colored, Natural Coloreds, North Country Cheviots, Rambouillets, Targhees, Texels, Tunis, Dorpers, White Dorpers, Columbias, Corriedales, Katahdins, Merinos, Babydoll Southdowns and Suffolks-Fitted & Slick Shorn. Polled Dorsets, Hampshires and Suffolks now have two completely separate shows for Fitted and Slick Shorns, while Lincoln, Romneys and Border Leicesters feature two separate breed shows for the white and natural colored sheep. Judges for this year's event will be Skip Anderson, ND; Brad Ellerbrock, IL; and Randell VonKrosigk, SD. The National Junior Southdown Show, National Junior Tunis Show, and the United National Junior Suffolk Show will be held in conjunction with the All American Junior show this year. Also, new this year the Romney breed will be having their National Junior Romney Show at the All American. Thank you to all of the National Breed Associations and their breeders for

their continued special sponsorship of this show!

If you have never attended an All-American Junior Show please make plans to attend this very special event! It is much more than just a sheep show, as there are several activities for the whole family. The show features a lamb camp for young sheep owners, a Wisconsin Corn Hole tournament for exhibitors, a fun Ag Olympics social event, a sheep skil-a-thon competition with several participation awards being sponsored, a sheep judging contest, free complimentary food service for exhibitors and their families, individual and team showmanship competitions, wool show, promotional contests featuring a NEW social media video category for exhibitors and an adult age photo division, a college scholarship program for older exhibitors, a thank-you note writing booth where participation awards are given away, a fun virtual shearing contest with an adult division, and a

CONTINUED ON PG 18

NSIP
National Sheep Improvement PROGRAM

- Sires are purchased from multiple states to keep our sheep unrelated
- Test for OPP, CL & Johne's
- Conden & TMEM154 Tested
- Negotiated Delivery Available

EST 2018

JJ'S KATAHDIN

SHEEP FARM

JEFF & MARY GROSS
1918 Oak Rd., Defiance, IA 51527
jjgross@fmctc.com
712-579-4906 • jjskatahdinsheepfarm.com

"ALL-AMERICAN JUNIOR SHOW" CONTINUED FROM PG 18

lead line and dress-a-sheep competition, plus much more!

This will be the second year of the Supreme Champion Ram and Ewe drive on Sunday afternoon after the breed shows are completed and prior to the closing ceremonies. The AAJS is planning some very special awards for our winners! Also, we want to remind everyone of the implementation of a minimum age limit of 4 years old by January 1st for a junior exhibitor to enter the breeding sheep or market lamb classes. Younger exhibitors are still more than welcome to participate in showmanship classes, lead line and dress-a-sheep contests, attend lamb camp, assist older exhibitors in the breeding sheep show rings and participate in all of the promotional contests and other fun activities associated with the show.

The All American extended the show schedule by a half day four years ago and will continue to do so this year as it worked out very well for all of the attendees and staff. Sheep need to arrive by Thursday, June 29th at noon as all check-in will take place

on Thursday. Activities actually start Thursday afternoon with the Judging Contest, Fitting Demos, Lamb Camp and Leadline & Dress-A-Sheep Contests.

The Opening Ceremonies will kick things off on Friday morning, July 1st followed by Showmanship Classes and some Breed Shows. On Friday night there will be the Wisconsin Corn Hole tournament and the Harry & Mary Blome pizza party starting at 6:00 pm right on the show site. There will be a tailgate dinner on Saturday night along with the Ag Olympics taking place for exhibitors, with prizes given out. Come and enjoy the family fun!

ENTRIES CLOSE: MAY 25TH, 2023

There will be a higher entry fee for any late entries submitted after the deadline date and post entries at the show. Check out the All-American Website:

FUNDRAISING

The All-American Junior Show Committee has four major fundraising activities that are held to help

raise funding for this special junior show. Following is information on these activities and the show would certainly appreciate your support in these fundraising efforts:

AAJS RAM SEMEN ONLINE BENEFIT AUCTION

Sale will be held on May 15, 2023 on Integrity Livestock Online Sale Site at: www.integritylivestocksales.com

Please support this major fundraising event by bidding on semen lots, and some specialty items will also be offered.

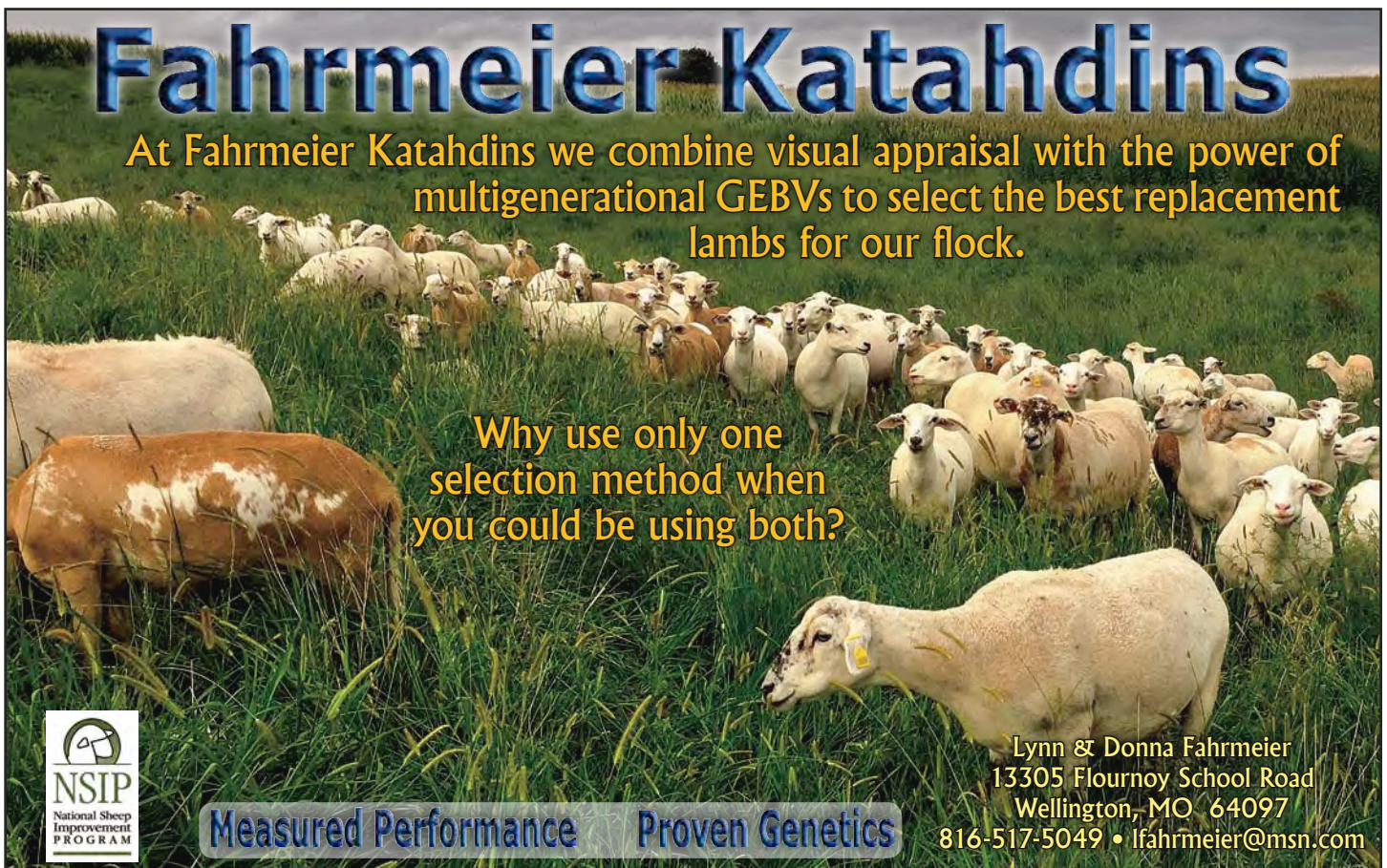
All proceeds will go directly towards the All American Junior Show.

ALL-AMERICAN GIFT BASKET & SPECIALTY ITEM

SILENT AUCTION

Gift Baskets and specialty items will be on display during the duration of the All-American Junior Show for bidding. Bidding will close on Sunday, July 2nd at noon. Basket and item donations would be greatly ap-

CONTINUED ON PG 20



Fahrmeier Katahdins

At Fahrmeier Katahdins we combine visual appraisal with the power of multigenerational GEBVs to select the best replacement lambs for our flock.

Why use only one selection method when you could be using both?

NSIP
National Sheep Improvement Program

Measured Performance Proven Genetics

Lynn & Donna Fahrmeier
13305 Flournoy School Road
Wellington, MO 64097
816-517-5049 • lfahrmeier@msn.com

LAUDEN ACRES

Katahdins

ATTENTION! 2023 SALE SHEEP BY LONG GENES & LY 063



LY 215, RR

FALL YEARLING RAM - MIDWEST



LY 247, RR

**YEARLING EWES
5 ADDITIONAL EWES LIKE HER TO
SEDALIA AND OHIO SHOWCASE**



LY 224, RR

FALL YEARLING RAM - OHIO



LY 298, RR

FALL RAM LAMB - MIDWEST

**ALL RAMS Sired
BY LONG GENES**

Yearling Ewes -

(5) Long Genes (1) LY 063

**We will also be sending (4)
Fall and (1) Jan. Ewe Lambs
to Midwest and (2) Fall Ewe
Lambs to Ohio**



LY 305, RR

FALL RAM LAMB - OHIO

SPECIAL NOTICE!

**Quality Fall Ewe and Ram Lambs FOR SALE
at the farm. Don't hesitate to give us a call!**

See our website for additional photos.

***We currently plan
to attend in 2023:***

***Ohio Showcase Sale
Midwest Stud Ram Sale***

Shepherd:

**Marshall Koppenhaver
570-850-7112 (cell)**

Flock Consultant:

**Dick Kuzemchak
814-280-2817 (cell)**



*Division of
Mahantongo Game Farms
Established 1935*

**Lynn A Laudenslager • 570-847-9817 (cell)
<http://laudenacres.com/>**

Mahantongo Game Farms

**559 Flying Eagle Road
Dalmatia, PA 17017
570-758-2095 (fax)
marshall@pagamebirds.com**

preciated. Just bring them to the show in Madison!

ALL-AMERICAN JUNIOR SHOW RAFFLE TICKETS

Cost \$5.00 each or 5 for \$20.00 1st Prize: \$1000 Cash Prize 2nd Prize Sydell Big H.A.S.S. Hydraulic Trimming Stand (\$650 value) 3rd Prize: Bose Quiet Comfort 45 Wireless Bluetooth Headphones (\$329 value)

Tickets are available at the Continental Dorset Club Office, P.O. Box 506, North Scituate, RI 02857. Many sponsoring breeds mail out raffle tickets with their office work and annual dues notices so when you see them PLEASE lend your support! Junior show exhibitors also have raffle tickets to sell and they will be trying to be top

salesman in our popular ticket incentive program so help them out by buying tickets from them! Final drawing will take place on Sunday, July 2nd. Need not to be present to win. The high selling raffle ticket juniors will be receiving some great prizes!

ALL-AMERICAN JUNIOR SHOW SEDALIA BENEFIT AUCTION

THURSDAY, JUNE 15, 2023

(During the Midwest Stud Ram Sale Supreme Champion Show)

Early evening, swine barn, Missouri State Fairgrounds, Sedalia, MO.

Reproductive Specialty Group has donated ET Flush & transfer surgery and LAI surgeries

Willoughby Livestock Online Sales has donated an online sales package Banner Publications has donated a one page color ad in "The Banner"

Gene Check has donated a DNA testing package

Mumm Sheep Equipment has donated a walk through gate

Premier 1 Supplies has donated a set of cordless electric shears

Sullivan Supply has donated an Air Express Mini Blow Dryer

2023 ALL-AMERICAN JR SHOW LODGING OPTIONS LOCATED ON PAGE 21



Triple L Farms

We will be attending the EAPK sale July 8th at Morehead KY and the KHSI Expo Aug 12th at Van Wert, Ohio



Member NSIP since 2001 Flock ID 640044

Raising Registered Katahdins since 1990



**Larry & Lisa Weeks
Waynesboro, VA • 540-480-8141
lweeks9@gmail.com • <https://triplelfarms.com/>**





2023 All-American Jr. Expo Lodging Options

Madison, WI

Clarion Suites at the Alliant Energy Center
2110 Rimrock Road, Madison, WI
(608) 284 - 1234
Group Name: All-American Junior Sheep Show
Cut-off Date May 27, 2023
Currently blocked: 65 Double Queen, Single Queen, or Single King with Sofa Sleeper
\$144.00 - \$154.00 + tax

Home 2 Suites by Hilton Madison Central
2153 Rimrock Road, Madison, WI
(608) 949 - 9650
Group Name: All-American Junior Sheep Show
Cut-off Date May 17, 2023
Currently blocked: 20 Double Queen Rooms with pull-out couch suites
\$199.00 + tax

Sheraton Madison Hotel
706 John Nolen Drive, Madison, WI
(608) 234 - 1022
Group Name: All-American Junior Sheep Show; use code AAJ
https://www.marriott.com/events/start.mi?id=1653572974637&key=GRP
Cut-off Date May 29, 2023
Currently blocked: 100 Double Double Rooms
\$144.00 + tax

Camping - Alliant Energy Center	
(608) 267 - 3976	
Self Registration, First-Come First Served	
Camping includes access to 24-hr restrooms & showers in Pavilion 1 along with portable restrooms on the island.	
North Lot	Willow Island
30 amp connections and water hookup access	99 sites 25 of which are 20/30/50 amp hook-ups and 74 are 20/30 amp hook-ups

Holiday Inn Express & Suites Madison Central
610 John Nolen Drive, Madison, WI
(608) 709 - 5050
Group Name: All-American Junior Sheep Show
Cut-off Date May 28, 2023
Currently blocked: 35 Double Queen Rooms
\$149.00 + tax



Since 1992

xpressionsonline.us
Graphics Specialists

Websites
Social Media
Brochures
Ads
Trailer Decals
YOU NAME IT!

Gail M. Hardy
479-439-0726
gail@
xpressionsonline.us

Cheri Haire
207-383-5672
cheri@
xpressionsonline.us

<https://xpressionsonline.us>

SRZ ZIMMERMAN'S FARM

Production Trait Katahdin's

Pasture Born & Raised **EASY CARE!**

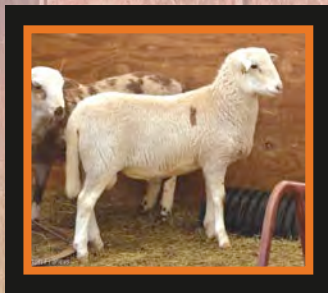
Breeding For
Parasite Resistance • Consistent Twins
Maternal Milk • lbs. of Lamb Weaned

Rotated with Single Poly Wire

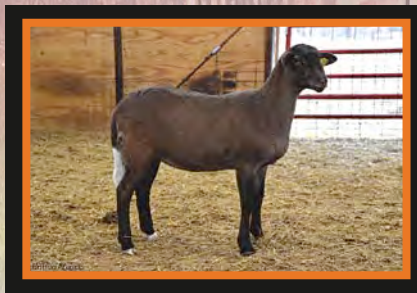
NSIP
National Sheep Improvement Program

STUART ZIMMERMAN - 205 State Rd. E • Tunas, MO 65764

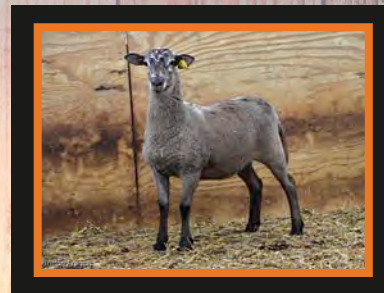
"DARK KNIGHT" (TOR 572
ET) X SCD 6700
DOB 9-13-2022 TWIN



"DARK KNIGHT" (TOR 572
ET) X FRA 3273
DOB 9-17-2022 SINGLE



"DARK KNIGHT" (TOR 572
ET) X SCD 6689
DOB 9-12-2022 SINGLE



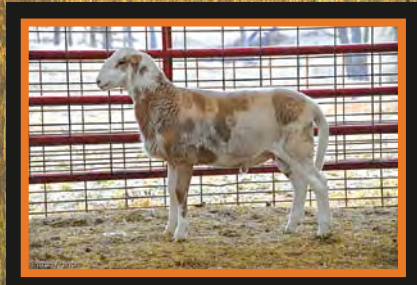
**Open House
May 20-21st**

Fall and Spring Lambs available.
Stud Rams and consignment sheep are
available for viewing.
Sheep will be available on a first come,
first served basis.
Nothing sold prior to the open house!

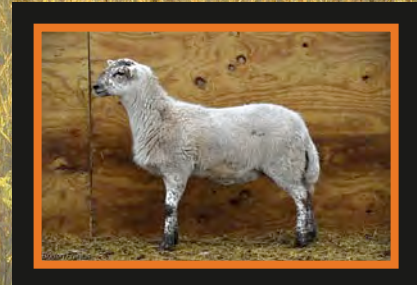
"JOE EXOTIC" X DOC P2364
DOB 9-16-2022 SINGLE



"JOE EXOTIC" X AHM 1079
DOB 9-12-2022 SINGLE



"AFFIRMED" (EHJ 665) X
DOC P 2385
DOB 9-15-2022 SINGLE



Francis Family Farms Katahdins Online Sale

June 5th on www.wlivestock.com
20 head of our best Yearling, Fall
and Spring Lambs

Delivery available to the Midwest Stud
Ram Sale, All-American Junior Show
(WI), and Youth Sheep Expo (IN).

**FRANCIS
FAMILY FARMS**
Katahdins

HOME OF THE PIPESTONE EWE FLOCK

 FIND US ON FACEBOOK:
FRANCIS FAMILY FARMS KATAHDINS

17292 Monroe Road 735 • Paris, MO 65275
573.473.0633 – Britton

KHSI Board Meeting Minutes

DECEMBER 15, 2022

President Dan Turner called the meeting to order at 8:02 PM EST.

Board members present: Dan Turner, Howard Covington, Karen Kenagy, Cindy DeOrnellis, Larry Weeks, Justin Fruechte and Mandy Fletcher. Alan Culham was also present.

Dan asked the board to review the minutes from November 17, 2022. Cindy moved the minutes be accepted. Howard seconded the motion and it passed. The November minutes were accepted.

Alan presented the treasurer's report which also included the year-to-date profit & loss and the balance sheet. Alan also provided the November registration and membership report.

OLD BUSINESS

NSIP COMMITTEE - DAN

Dan reported that the committee is finalizing the last documents, including the spreadsheet for the reimbursable grants and GEMS projects. Reimbursement criteria was discussed.

HAIRALD BACK COVER AUCTION - ALAN

Alan discussed using PL Auctions and setting a \$500 minimum bid per ad for the back cover of the Hairald. Larry made the motion and Cindy seconded to auction the back cover of the Hairald for all 4 (four) future editions (3 editions in 2023 and 1 edition for the winter of 2024).

KHSI PHOTO CONTEST - ALAN

Alan reported that judging had been completed and will be posted on our website. Winners will be published in the next issue of the Hairald.

NEW BUSINESS

COLOR ON REGISTRATION PAPERS - ALAN

Alan discussed the letter received from a member who requested that color be included in the registration of an animal. The board determined that color is not an economically important trait and the variety of colors would make this difficult. It was noted that when promoting animals, a photo can suffice for showing color.

ELECTRONIC VOTING - DAN

Dan informed the board of his

research with a third-party service provider for electronic voting options. The consensus of the board was to continue to use the standard system that is currently in place for voting.

WEBSITE FUNCTIONALITY - DAN

Dan reported that the website is mostly operational but is still being updated. There are substantial dead links to pdf files. The website work group will fix the information within important links and place them where they belong.

2023 BUDGET

The budget was reviewed, modifications were made, and it was adopted by the board.

EMAIL FROM KATAHDIN PRODUCER - LARRY

Larry informed the board that he received an email from a Katahdin producer who is concerned about the Hairald not being received in a timely manner. Alan stated that he would check on this issue with the publisher.

Larry moved to adjourn the meeting and move into Executive Session. Howard seconded the motion. The motion passed and Dan adjourned the meeting at 9:09 PM EST.

A motion was made by Larry and Cindy, unanimously, to end Executive Session and reconvene into the Regular Meeting Session at 9:18 PM EST.

REGULAR MEETING SESSION - DAN

Next meeting: January 26th @ 8 PM EST

No further discussions came before the board. The meeting adjourned at 9:23 PM EST. (Justin made the motion and Larry seconded).

JANUARY 26, 2023

President Dan Turner called the meeting to order at 8:00 PM EST.

Board members present: Dan Turner, Howard Covington, Larry Weeks, Cindy DeOrnellis, Karen Kenagy & Justin Fruechte. Mandy was not present. Alan Culham was also present.

Minutes were reviewed and Justin move to approve. Howard seconded the motion and motion passed 6-0. Board reviewed treasurer's reports that included end of year summaries. 2022 was second highest year for registrations and transfers. Memberships

are at an all-time high.

OLD BUSINESS

NSIP COMMITTEE REPORT - DAN

Reimbursement process for genotype and GEMS submissions is progressing and should begin in early February. Michelle Canfield, Tom Hodgeman and Dr. Ron Lewis developed the process that will reimburse \$10 each for qualifying genotype and GEMS samples submitted. Dr. Lewis will verify the submissions and Alan will write the reimbursement checks, estimated at app. \$30,000 total.

Dan attended the NSIIC committee meeting while at the ASI convention and thanked the committee for the grant received by KHSI.

AUCTION OF HAIRALD BACK COVER - ALAN

Scheduled for Feb. 15 with PLAuctions. Will publicize with ad in upcoming Hairald, email blasts, web page notice and Facebook posts.

HAIRALD COMMITTEE REPORT - JUSTIN

First goal of the committee is to assess the needs/goals of the committee. Ad rates will likely be increased next year. Goal is to keep content diverse to meet the needs of KHSI's diverse membership. Britton Francis will provide leadership for a new "Ask the Expert" column. Justin suggested a brief survey for suggested topics/articles at the next Expo. Karen also participated in the meeting. The last issue of the Hairald was late in arriving due to printing complications. Alan and Gail visited with the publisher about providing more timely delivery. The online version will be posted as soon as available to alleviate late arrival by USPS mail.

HONORARY MEMBERS - DAN

At the December meeting, a written recommendation was presented to make Dr. Notter and honorary member. Howard Covington asked that Mark Dennis also be considered. The board agreed that a formal process needs to be developed for future nominations. Larry moved to recognize Dr. Notter and Mark Dennis as honorary members. Howard seconded the motion and it passed 6-0.

CONTINUED ON PG 24

KHSI MERCHANDISE SALES – HOWARD

Howard noted that present policy states that those selling official KHSI merchandise must send 25% to KHSI. Alan has not received any commissions in the last couple years. The logo is provided for use of members at no charge. Larry moved that "sheepthings.com" be assessed no commission when marketing KHSI promotional wear and materials. Howard seconded the motion and it passed 6-0.

EXPO COMMITTEE REPORT – CINDY

The Expo date is August 3-5, 2023, at Van Wert, OH. Ron Young is co-chairing the committee. Kathy Bielek will also join the committee as she has knowledge of speakers and topics available in the state. Speakers are being contacted to speak on a variety of topics.

Howard asked about compensation for those who helped with the Expo event and sale. Policy states that a free membership is offered to those who have worked at least 4 hours, pending confirmation by the

operations manager. Howard noted that there are several members who work much more than 4 hours. Larry moved that deserving sale staff designated by operations manager and sale manager receive compensation of free registration to the Expo and hotel. Howard seconded the motion and motion passed 6-0.

Dan suggested Expo staff wear matching shirts or caps so attendees know who to approach for directions/questions. He also suggested holding a Silent Auction to benefit the scholarship fund or youth committee. Those suggestions will be relayed to the committee.

KAT+ COMMITTEE – HOWARD

Board discussed several suggestions resulting from the committee's last meeting. Cindy moved KHSI support an online sale for Kat+ replacement ewes. Justin seconded the motion and motion passed 6-0. In 2023, sale will be held with PLAuctions in May. Lots must be at least 10 head.

Cindy moved that Kat+ requirements be changed to state that Kat+

ewes must have a registered sire or dam. Howard seconded the motion and motion passed 6-0. Previous rule stated that Kat+ ewes must be sired by a registered ram.

NEW BUSINESS

SCKA KREG GRANT APPLICATION

Larry moved to approve the grant application and Howard seconded the motion. Motion passed 6-0. The grant will help fund a field day in Texas.

ASI CONVENTION – DAN

KHSI was well represented and Lisa Weeks and Lynn Fahrmeier are regional directors that were chosen to serve on the executive board.

Larry moved the board go into closed session and Justin seconded the motion. Motion passed 6-0. Howard moved to return to open session. Larry seconded the motion and motion passed 6-0.

Discussion in closed session was that Alan and Jeff Ebert's contracts will expire in 2025. Need to review

CONTINUED ON PG 25

GFS
Family Farms
ingerich

Silas Gingerich
 (276)870-6234
 silasfromgfs@gmail.com
 Joe Gingerich
 (276) 870-9563
 f Gingerich Family Farm

GFS 22231
 sells June 8 on PLA!

JUNE 8, 2023

GFS 22223
GFS 22244
GFS 22247

NSIP
 National Sheep Improvement PROGRAM

Fall & Spring born lambs sell!

Mark your calendars for our 2nd annual online sale, June 8 with PLAuctions.live

contracts and determine how to avoid both contracts terminating in same year.

Next Meeting - February 23 @ 8:00 PM EST

Larry moved to adjourn and Cindy seconded the motion. Motion passed 6-0 and Dan adjourned the meeting at 9:45 PM EST.

FEBRUARY 23, 2023

President Dan Turner called the meeting to order at 8:00 PM EST.

Board members present: Dan Turner, Howard Covington, Larry Weeks, Cindy DeOrnellis, Karen Kenagy, Justin Fruechte, and Mandy Fletcher. Alan Culham was also present.

Minutes were reviewed and Howard moved to approve. Justin seconded the motion and motion passed 6-0. Board reviewed treasurer's reports that included end of year summaries. Alan also provided the January registration and membership report.

OLD BUSINESS

NSIP COMMITTEE REPORT - DAN

Reimbursement process for genotype and GEMS submissions is

progressing and the committee ran a test-trial. Michelle Canfield, Tom Hodgeman and Dr. Ron Lewis developed the process that will include reimbursement forms - \$10 each for qualifying genotype and GEMS samples submitted. The online database is not showing the updated information at this time, but the committee is working to resolve this and continue to move forward.

HAIRALD BACK COVER AUCTION

- ALAN

Done Feb. 15 with PLAuctions. Publicized with ad in the latest Hairald, email blasts, web page notice and Facebook posts. Several members purchased back cover advertising. The decision was made to continue with auctioning the back cover only at this time.

KHSI HONORARY MEMBERS - ALAN

Alan spoke with Dr. Notter and he confirmed that will attend the 2023 expo event, and be recognized as an honorary member. Howard Covington confirmed with Mark Dennis as well, and he was pleased to accept.

Alan made a suggestion that KHSI pay for hotel stays of the honorary members for a night or two during the expo. Further discussion will occur.

EXPO COMMITTEE REPORT - CINDY

The planning committee is moving forward with the Expo details. Speakers are still being contacted to speak on the variety of topics. A tentative agenda is set.

Larry suggested that Dave Knotter speak at the Expo.

Cindy suggested that an NSIP for Beginners workshop be held, along with a hands-on-workshop. These suggestions will be relayed to the committee.

Questions have been asked about videoing sessions to be posted on our website.

KAT+ COMMITTEE & SALE -

ALAN & JUSTIN

On May 24, 2023, the sale will be held with PLAuctions. Lots must be at least 10 head.

The committee evaluated that Kat+

CONTINUED ON PG 26



BLOCK KATAHDINS **BMS**

Raising registered Katahdins since 2019

We have a really nice set of lambs this spring.

We will also have ewe lambs for sale at the farm.

Look for our consignments at the

- Indiana Premier Sheep Sale
- Midwest Stud Ram Sale.

Bruce Block
Broadlands, IL • 217-841-3080

 See us on Facebook
Block Katahdins

requirements be changed to state that Kat+ ewes must have a registered sire or dam. Previous rule stated that Kat+ ewes must be sired by a registered ram. The board adopted these new requirements at the January 2023 meeting. There has been lots of interest from new members. The committee will continue to make final plans and move forward. Expect an email blast in the next while.

NEW BUSINESS

KHSI SCHOLARSHIP - ALAN

The committee recommended that the application include the addition of accepting attendance to a technical school, since several of those institutions are adding animal science. Alan will make the above addition. The board was informed that the scholarship application will be in the Hairald, on Facebook, and the website. Scholarship deadline is set for July 1, 2023.

KREG GRANT QUESTION - HOWARD

The question was raised about what happens if a field day gets

larger - meaning a greater number of event registrations - than what was anticipated and what this means for the funds allocated. Board discussions were to continue to encourage grant applicants and relay that funding is available. It was suggested that the applicant indicate what the anticipated amount of funding is. An increase of funding should be based on increased attendance only. Larry suggested that the initial plan that comes to the board include the total expected, along with those that may walk in without registering ahead of time.

PAST DUE ACCOUNTS - HOWARD

Discussions were had about certain registration paperwork complications between breeders and buyers, and examples were given. This problem involves a small claims issue between the buyer and seller. This brought up further discussions by the board about dealing with past due accounts. Ideas of keeping accounts and membership up to date and paid were suggested

and will be revisited at a later time.

**KATAHDIN GENETIC STAKEHOLDERS
REP. - DAN**

The board will develop a letter to submit to ASI to recommend a genetic stakeholders representative. Further discussions will occur.

ASI FUNDING - DAN

Lisa Weeks and Lynn Fahrmeier are regional directors that were chosen to serve on the executive board of ASI. Alan noted that KHSI is receiving increased attention with ASI. Larry made a motion that KHSI become a bronze level partner with ASI at \$2500.00. The motion did not pass. Discussions were held and the board requested we revisit this at our March meeting.

Next Meeting - March 23 @ 8:00 PM EST

Howard moved to adjourn and Justin seconded the motion. Motion passed 6-0 and Dan adjourned the meeting at 9:30 PM EST.

Visit the KHSI website: <https://katahdins.org>
check the calendar for events, review past issues of the Hairald, online membership directory & registration and much more!



**Three Positions Open
Send Bios to KHSI Operations
info@katahdins.org
Due May 15, 2023**

SRS



SALMON RUN FARMS At 2022 NAILE



NATIONAL CHAMPION RAM
SRS 480 "POWER DRIVE"
SRS 445 "DRIVE TRAIN" x SRS 142



**RES. NATIONAL
CHAMPION EWE SRS 391**
"DOC BAR" x EHJ 669

*Ask about Salmon Run
Farm's Futurity Program for
your next show Katahdin.
We carefully breed
exceptional Katahdin sheep
to exacting standards that
SHINE IN THE RING and
THRIVE ON THE FARM!
Complimentary delivery to the Midwest
several times a year*



**RES. JR. CHAMPION RAM &
1ST JANUARY RAM SRS 655**
"ACCELERATOR" SRS 407 x SRS 181



*****SRS*****
15 CLASSES AT NAILE
SRS FIRST IN 12 CLASSES
SRS SECOND IN 5 CLASSES



**CONGRATULATIONS TO RAE LYNN
DEROSIER ON HER RES. JUNIOR
CHAMPION EWE SRS 703**



**NATIONAL PREMIER
EXHIBITOR
BEST FLOCK
BEST FOUR HEAD**

*A big thanks to my crew: Rae, Ed Julian,
Jacob Gargas, Billy Wade, Teresa Hromis, Cat
Hromis, and Gabriella Raber*

Leslie Raber
Sabattus, Maine
207-838-5813

SalmonRunFarms.com
SalmonRunFarms@gmail.com

Salmon Run Farms LLC

Raelynn Derosier
Show Manager



Join us on
Facebook:
Leslie Raber

SRS

Important Dates

- April 15, 2023** Texas Field Day - Gatesville, TX
- May 15, 2023** KHSI Board of Director Candidate Submission Deadline (3 seats available)
- June 2-3, 2023** SCKA Gathering - Vicksburg, MS
- June 3, 2023** RMKA Meeting - Albuquerque, NM: rmka.org
- June 8-9, 2023** RMKA Meeting - Big Timber, MT: rmka.org
- June 12, 2023** Dr. Leroy Boyd Katahdin Junior Show - Missouri State Fairgrounds, Sedalia, MO
- June 24, 2023** Coalfield Sheep Association Meeting
- July 1, 2023** KHSI Youth Scholarship Application Deadline
- July 8, 2023** Eastern Alliance for Production Katahdins 3rd Annual Symposium and Sale - Morehead State University, Morehead, KY
- Aug 10-12, 2023** Katahdin Expo and Sale - Van Wert County Fairgrounds, Van Wert, OH
- November 1, 2023** KHSI Photo Contest entries due

2023 Hairald Publication Dates

Hairald Publication Dates & Advertising Deadlines. Page 2

ATTN

*All events listed
been canceled a
Please check w
latest informati*

Educational

- April 15, 2023 — Texas Field
- June 2nd and 3rd, 2023 – SC
- June 3, 2023 - RMKA Meeting
- June 8 & 9, 2023 - RMKA Me
- July 8, 2023 – Eastern Allianc
Symposium & Sale. Mor
KY
- August 10 – 12, 2023 – Katah
Fairgrounds – Van Wert,



See Table of Con

Deadlines, Dates and Notes

ATTENTION

Information on this page have not been updated at the time of printing. Please check websites or call for the most current information on status of events

Events Calendar

Day, Gatesville, Texas
KATA Gathering, Vicksburg, Mississippi
g, Albuquerque, NM: rmka.org
Meeting, Big Timber, MT: rmka.org
e for Production Katahdins 3rd Annual
ehead State University – Morehead,
Katahdin Expo and Sale – Van Wert County
OH

Katahdin Sale Roundup

- May 11-13, 2023 - OHIO SHOWCASE Show & Sale. Darke County Fairgrounds - Greenville, OH
- May 23, 2023 - Luzon Farm Katahdins Online Sale
- May 24, 2023 - KAT Plus Online Commercial Ewe Sale
- June 5, 2023 - Francis Family Farms Production Sale
- June 5, 2023 - Prairie Lane Farm Online Production Sale
- June 6, 2023 - The ROCK 1st Annual Production Katahdin Sale
- June 16, 2023 – Midwest Stud Ram Katahdin Sale – 8:00 am Missouri State Fairgrounds, Sedalia, MO
- July 8, 2023 – Eastern Alliance for Production Katahdins 3rd Annual Symposium & Sale. Morehead State University – Morehead, KY
- August 10 – 12, 2023 – Katahdin Expo and Sale – Van Wert County Fairgrounds – Van Wert, OH
- August 19, 2023 – Coalfield Hair Sheep Sale – Coalfield Agricultural Center, 449 Agriculture Drive, Clintwood, VA 24228. For more information or to receive a sales catalog, contact Brad Mullins – Dickenson County Extension Office (276) 926-4605 wmullins@vt.edu
- October 7, 2023 – Midwest Hair Sheep Sale – Salem, IN. Contact: Aaron Walker, 812-620-3356 or aaronwalker82@icloud.com.

Focus on Eweth Calendar

- June 12, 2023 – Dr. Leroy Boyd Katahdin Junior Show. Missouri State Fairgrounds, Sedalia, MO
- July 1, 2023 – KHSI Youth Scholarship Application Deadline
- JUNE 28-JULY 2, 2023 - ALL-AMERICAN JUNIOR SHOW, Alliant Energy Center - Madison, WI

KHSI posts information on sheep sales and events as a service. Posting sale and event information does not imply endorsement or verification of the claims of any sale or event. KHSI encourages the use of performance records and production data as the primary means of selecting and ranking sheep. Sales and events posted are not sanctioned by KHSI unless otherwise noted.

Contact the KHSI Operations Office to ask for your sale or event to be posted. 717-335-8280 ext 1 or info@katahdins.org. Check for updates on the KHSI Facebook page and the calendar page of <https://katahdins.org>

"Spring in the Pacific Northwest",
2019 KHSI Photo Contest submission

Contents (page 1) for articles on Coming Events

CAMP CREEK KATAHDINS

620-842-2226



**2022 KHSI EXPO
RECORD HIGH SELLING
RAM - \$7200 SALE**

HIGHLIGHTING OUR RAMS

- TRB 1586 "Precision Chrome", son of "Polished Chrome"
- TRB 1457, son of "Amtrac" TRB 1000
- TRB 1523, son of "Confirmed" and BAG 3045
- TRB 1370 son of "Pale Ale" and BAG 3045, Twin to TRB 1371 "Ranger"

HIGHLIGHTING OUR EWES:

- Several granddaughters of 2017 Sedalia Reserve Grand Champion/ Reserve Junior Champion BAG 3045
- Twin to TRB 1425, 2021 High Selling Ram at MWSRS sold for \$5000
- Several "Amtrac" TRB 1000 daughters
- Several "Polished Chrome" TRB 1259 daughters

We have a large group of spring lambs

**Don't miss your chance at some of the top proven genetics!
Call and reserve your lambs today, before they are all spoken for!**

FREE DELIVERY TO 2023 MWSRS/EXPO

**CAMP CREEK KATAHDINS / OWNER BRANT BARINGER
Attica KS • 620 842 2226 • campcreekkatahdins@gmail.com**

 **FIND US ON FACEBOOK:
CAMP CREEK KATAHDINS**

Full deposit refund guarantee if you're unsatisfied

KAT Plus Online Replacement Ewe Sale Rules

Eligible to ewes produced through the KHSI Kat Plus Program

**KHSI
KAT
PLUS
ONLINE
REPLACEMENT EWE SALE**



**MAY
24TH
2023**



Flocks enrolled in the program are required to:

- Must be a KHSI member in good standing
- Ewes must be sired by a registered Katahdin ram owned by participant and recorded by such with the KHSI registry or ewes must be dammed by a registered Katahdin ewe owned by participant and recorded by such with the KHSI registry. Either way at least one parent must be a registered Katahdin.
- Must be enrolled in the Katahdin replacement ewe program
- KHSI registered flocks can self-enroll in program
- Commercial flocks may be enrolled by seller of registered ram or can enroll themselves if they breed to a registered ram.

- Contact: info@katahdins.org to enroll flock
- Sire of ewes need not be identified but is encouraged to aid merchandizing by:
- Allowing resulting ewes to enter the KHSI "upgrading" program
- Identification of NSIP sires will allow some prediction of daughter's potential performance levels by use of sire's genetic evaluations.
- Size of offering: Minimum of ten ewes
- Katahdin Commercial Ewe Tags – Upon enrollment KHSI will issue an allotment of unique Katahdin Commercial Ewe tags to the participant. Tags will have the KHSI logo and be black in color. KHSI will provide tags to participating

- flock at cost of \$1.00 per tag.
- Katahdin Plus Online Replacement Ewe Sale will be managed by Production Livestock Auctions (PLA). 4% Commission will be charged from which 0.5% will go to KHSI as the sale sponsor. No charge will be accessed for "no sales". Consignments will have a minimum lot size of 10 head. Larger consignments (up to 50 head per lot are encouraged). Sale terms of delivery will be established by the consignor to reflect ewe availability. Buyer is responsible for transportation costs. All ewes sold in this sale must be tagged with the official KHSI Kat Plus tag.
Contact KHSI operations to place entries. info@katahdins.org

WALDOVIEW FARM
Strongly Maternal, Parasite Resistant
Seedstock for Forage-based Producers

EST. MAY 17, 2020
EASTERN ALLIANCE
FOR PRODUCTION
Katahdins

GENOMIC ENHANCED EBVs

Tom and Lindsay Hodgman
Winterport, Maine • 207-852-2764
hodgmans@msn.com

Visit us on Facebook / [waldoviewkatahdins/](https://www.facebook.com/waldoviewkatahdins/)
<https://www.katahdinsforsale.com/>

Hair Coat Inspection is Here

by Howard Covington -Haircoat
Video Inspection Committee
Chairman

Well we made it through winter and spring is in the air. Starting May first through September 30th will be time for those of us that need to do hair coat inspections to start inspecting.

The first thing I would like to remind everyone is that if you have been a KHSI member for one year how you can call or email Alan at operations. He will send you a link to the hair coat inspection test and you take the

test at home and then email the results back. If you pass the test then you can inspect your own sheep.

For those of you that haven't been a member for one year or don't want to take the test then you will have to do a Virtual Video inspection. We have a good video on how to make a video and written information on how to. If you are going to do a video and send it in to the judges then go over this information a couple of times. We will only give two do overs per animal. If you don't get it right then you have to

wait till next year.

KHSI has all the information on our new website for the Hair Coat Inspections. Click on Programs on the new web site.

When you open Programs up you will see Articles and under Articles click on KHSI Video Instructions for a Virtual Hair Coat Inspection. After you have read this article and understand it right, below it is a short video on how to do a Virtual Hair Coat Video. Watch it and then proceed with your video.



New Personal Status	
Lynda Watts	TN
Sarah Niesen	IL
Chloe Russell	ID
Sherry D. Clark	TX
Blythe Reichert	TN
Travis Sulfridge	KY
Melissa Mills	NC
Eric Voress	OH

KHSI Registry Office Report March 31, 2023

	JAN	FEB	MAR	YTD
	#	#	#	#
2023 Registration	726	872	711	2309
2022 Registration	532	747	857	2136
2021 Registration	1447	635	749	2831
2020 Registration	527	478	309	1314
2019 Registration	480	488	456	1424
2018 Registration	1383	824	560	2767
2017 Registration	498	395	414	1307
2023 Transfers	385	289	389	1063
2022 Transfers	237	216	416	869
2021 Transfers	504	265	438	1207
2020 Transfers	403	259	146	808
2019 Transfers	301	472	272	1045
2018 Transfers	637	386	216	1239
2017 Transfers	192	156	220	568
2023 Paid Membership	1663			

L G D
Livestock Guard Dogs
5/8 Great Pyrenees
3/8 Anatolian Shepherd

Capturing the best of both breeds
Jim Lovelace
Circle L Ranch
phone or text 636-358-8604

KHSI Adds Two New Honorary Members

MARK DENNIS AND KHSI

I was born July 20, 1935 in Millville, New Jersey. I was raised on a small farm during World War II. I graduated from High School June 1953 and enlisted in the United States Coast Guard. My father and 3 uncles had made careers out of the Coast Guard, therefore, it was only natural for me to follow in their footsteps. I spent the next 22 years and retired as a Lieutenant in November 1976.

Sara and I moved to South Louisiana where I worked for the next 22 years in the Oil industry. We purchased a small farm and named it Country Oak Ranch. I became interested in livestock in 1986 and purchased my first Limousine Cattle. In 1987 I attended my first Hair Sheep Festival in Bethel, MO and saw my first Katahdin Hair Sheep from the Heifer Project in Perry, AR. While there, I purchased a Ewe and her twin ewes and made our way home.

The Cattle became less and the Katahdin Flock grew. The Katahdin Breed faired very well in the hot

weather here in New Iberia where we have green grass all year.

I joined KHSI and attended all their annual meetings mostly held at the Heifer Project and the membership



Mark Dennis

grew substantially every year. The sales were very good for this breed.

I had the privilege to travel to Acapulco, Mexico with Dr. Charles

Parker to attend the Mexico National Livestock Show in 1992. At that time, the Katahdin Breed was not known in Mexico, so we passed out brochures to educate those in attendance all about our Katahdin Hair Sheep. It wasn't long that the Mexican Breeders became very interested in purchasing Katahdin Sheep.

In 1996 the KHSI annual meeting was held in Lafayette, LA. I was elected to serve on the Board of Directors for 5 years. In 1999 I was elected President of KHSI and I was honored to serve for 1 year.

I could not fill all the requests for registered Katahdins for my Mexican friends. I thought if I could form a group of Katahdin breeders from LA., TX., and MS. we could sell more sheep to Mexico.

May 22, 1999, I held a gathering at Country Oak Ranch to officially form a KHSI Regional Group. We call our group South Central Katahdin Association (SCKA). Officers were

CONTINUED ON PG 34

EWE Lamb Right Farm

A Flock of Distinction from Years of Selection

Pasture
Raised

Highly
Maternal

Quantitative
Results

Low Maintenance
Katahdins

NSIP
GEV's Flock









Dan & Jan Turner
SHIPPENSBURG, PA

KHSI/NSIP/ASI/EAPK
www.ewelambright.com

717-532-2435 • dan@ewelambright.com

elected at this time. Mr. Frank Boggs was our editor of the SCKA News Letter and provided all members with valuable information concerning our Katahdins.

In January 2000 the border of Mexico was closed to all cattle, sheep, goats, etc.

SCKA Board of Directors chose to continue the Regional Group, and we developed our SCKA Website June 6, 2002. Once breeders began to hear about our group, we had breeders from OK., AR., GA., AL., and FL. Join. SCKA has moved forward due to hard work and active membership. We provide an annual Gathering on the 1st Saturday of June in Vicksburg, MS. We have Private Treaty Sales and recently we have had on-



line sales. Now we have our own Facebook Page called Sheep Corner.

I have attended every KHSI Gathering/Expos since becoming a member except for 2 due to illness. I have attended the West Coast; Canada; and Mexico. I've served on numerous committees and have gained many long-time friends.

In 2013 I was presented a beautiful plaque from the Creadores Katahdin Breeders from Mexico that read, "Mark Dennis in Recognition for his early promotion of the Katahdin Breed in Mexico". I am told the Katahdin Breed is now the largest hair sheep breed in Mexico.

In 2015 I lost my wife Sara and thought that I was going to get out of the sheep business and move on, but I put the word out that I was looking for a 70 year old hot chick, that didn't smoke, didn't drink (much), and didn't take any pills. You all know that Mickey Sue and I went to the same church and when I heard she was a nurse in charge of 5 nursing homes, I

knew I had to move fast.

Mickey Sue and I were married in Cookeville, TN Aug. 5, 2016 at the EXPO. I began to teach Mickey Sue all about sheep only to find out she didn't like to put her hands places inside a sheep or wash ram testicles. June 2022 we made the hard decision due to my age to sell our COR flock and prepare to downsize. We sold all our sheep to Vera Farms LLC in Sebring, FL. Pedro Velez, owner of Vera Farms, and his family have become great friends and are moving forward with aggressive ideas with the Katahdins.

Mickey Sue and I want to travel while we have our health and may show up at your front door one day. We'll stay until the food runs out and then we'll go to the next unsuspecting rancher.

As you can see, Katahdins have been my life for the past 35 years. We will continue to serve the Katahdin Family in any way we can.

CONTINUED ON PG 37

WEST FORK FARMS

REGISTERED KATAHDIN SHEEP



Over the last several years we have used sires with just over a thousand lambs combined from 8-9 flocks with proven GEBV's to increase the maternal accuracy within our ewes. Our continued focus will be to keep those maternal & growth traits and add parasite resistance to build ewes for the future while maintaining a moderate size ewe.

WITHOUT DATA
YOU'RE JUST ANOTHER PERSON
WITH AN OPINION
-W. EDWARDS DEMING

Sires used for 2023 lamb crop, for more information visit our website, westforkfarms.com



Charley Pride
6401552021GBR042



Patriot
6401042018CC1375



Fortmeyer
6400382019JF9008

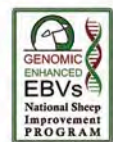


Old Red
6400292016CMG103



MacArthur
6400612019USD071

robert & kim walker
alpine, tn 38543
westforkfarms.com
(931) 510-1322



robert.walker@westforkfarms.com



Riv 963 "SMOKING GUN" 2nd Fall Ram at 2022 NAILE, Sired by "GUNSLINGER" and out of "FANCY". Sold to Lauden Acres, to follow "LONG GENES". Planning to bring a great pair of November rams to Midwest Sale!!



Riv 929 "EQUALIZER" CHAMPION Ram at 2022 Midwest Sale & high seller of the entire Sale! We have a great set of lambs by him!!!! MVF farm has an exciting set of lambs out of him this spring!!



Riv 916 "HIGH GENES" Maternal half brother to "LONG GENES". Owned in partnership with Dyer Family, IN. Sired Junior Champ, and Reserve Grand Champion Ram At NAILE For Brayden Burbrink, IN



"DOC HOLIDAY" Sired Champ ram at Ohio sale & Champion ewe at midwest sale owned by Braden Burbrink, IN

We have an exciting set of fall ram & ewe lambs bred for great structure & predictability. Our doors are always open!

We will be going to Ohio Showcase & Midwest Sales

DNA tested

RIV

Riviera

Quality Seed Stock

50 years in Sheep Industry

We are pleased with all the support of our program, and are happy to help you with any management, and the simple common sense approach to selecting genetically and productive females within your flock. Numbers have come and gone for the last 40 yrs in almost every breed of sheep, and so this will pass! Fact not Fiction!

**NBS
Program**

Mike & Leslie Nelsh

2834 Kennard Kingscreek Rd • Cable, OH 43009 • Ph: 937-471-5682 • Cell: 937-244-2673
rivierahamps@hotmail.com • http://www.rivierafarm.com

**TRB
Genetics**

MARK YOUR CALENDAR!

Rack of Lamb Corral

Rack of Lamb Corral's 11th Annual Online Sale June 4th, 2023

with Willoughby Sales www.wlivestock.com

**SPECIAL
THANKS**
to Bentley
Martin of
Southern
Flatts Ranch
for purchasing
this "Polish
Chrome" son



**TRB 1584
"New Chrome"**

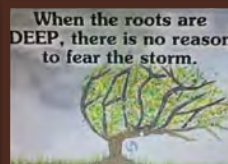
**Hope to see
everyone at
the MWSRS
Sedalia, MO
Good Luck
to All!**

Three reasons to get on the list for "Polish Chrome" offspring:

1st Reason: He sired the high selling Katahdin at the 2021 MWSRS

2nd Reason: He sired the 2nd high selling Katahdin at the 2022 MWSRS

3rd Reason: He sired the highest selling Katahdin ever sold at the KHSI EXPO



THERE IS A REASON!

RAM POWER + EWE POWER = LAMB POWER

A Dream Flock Built From Champions

Rack of Lamb Corral Owners/Operators Todd & Renee Bauer
8500 East Blanchard Ave., Hutchinson, KS 67501 • 620-245-1884
toddbauer@ks-usa.net • www.rackoflambcorral.com

**TRB
Genetics**

DAVE NOTTER'S IMPACT ON THE KATAHDIN BREED

Dave Notter has had 6 Katahdin specific efforts that have pushed Katahdins forward and allowed Katahdins to take their current position leading the sheep industry in research that increases the productivity of Katahdins in commercial sheep flocks. Dave Notter has also greatly impacted Katahdins in two industry wide efforts that have helped all breeds that have taken advantage of his efforts.

Briefly,

1) Released Katahdin specific adjustment factors and trait heritabilities in 2003.

2) Lbs. Lamb Weaned per Ewe EBV that became the Index. (First in the USA for any breed). Imitated work in 2002 and released in 2005.

3) Fecal Egg Count EBVs at Weaning and Postweaning (first in the USA). Work started in 2003 and released in 2007. In 2007, Notter combined the data from Kathy Bielek's SAE grants, Joan Burke's USDA Boon-

eville data, and the trial run Fecal Egg Count EBV work coordinated by Notter, Parker, Morgan from the flocks of Rodgers, Fahermeir and Morgan.



Dave Notter

Intellectually heavy work, by Notter of course.

4) Driver of the first Genomic SNP work that started in 2014. 96 Katahdin Sires with 10 progeny with

fecal egg count data

5) Oversaw the Quantitative Genetic Analyses of Dr Joan Burke's Organic Research (OREI) grant that evaluated

a. the heritability of periparturient rise in Katahdin ewes (first breed in the USA). While there is no EBV for periparturient rise, Notter, Brke and co-workers publication shows that selection of post weaning fecal egg count greatly impacts the periparturient rise.

b. redid the heritabilities of Katahdin traits for growth, reproduction and resistance to nematodes.

c. paper on heritability of FAM-ACHA in Katahdin lambs

6) The previous 5 points, laid a considerable portion of the foundation that resulted in the 2017 OREI grant to Joan Burke and co-researchers. This is the grant that led to the current release of Genomic Enhanced EBVs for Katahdins. While not as actively

CONTINUED ON PG 38



BLUESTEM FARM



Registered Katahdins

- Superior parasite resistance
- Outstanding maternal performance
- Tested free of OPP, CL and Johne's
- Forage based system





EASTERN ALLIANCE
FOR PROGRESSIVE
KATAHDINS

BTX Bluestem Farm
Judy & Art Sheridan
Weatherford, TX
817-584-4355
www.bluestemtexas.com

CANEY CREEK FARMS

2023 lambs are available starting in June



Join us on Facebook.
Caney Creek Farms Katahdins

Reserve yours today!

Dwayne & Kathy Kieffer
4864 Smiley Rd.,
Chapel Hill, TN 37034
931-703-0239 • 931-580-6909
caneycreekfm@united.net



involved in this grant, Dave Notter participated in the discussions prior to the writing and submission of the grant and in the conference calls discussing the results

Much of the above was done without Katahdin financial support, USDA financial support or minimal support.

There are two industry wide (aka all breeds) efforts that without, Kathdins would not have Genomic Enhanced EBVs.

1) In 1998, the National Sheep Improvement Program no longer had the Hereford Association to do EPDs for the sheep industry. In 1999, Dave Notter agreed to do EBVs for the sheep industry. And the USA sheep industry still receives EBVs to this day.

a. Did it with minimal financial support.

b. First time that EPDs could be compared across flock. Prior to that, only within a flock

c. Bottom line is that NSIP would not have existed after 1998 without Dave Notter.

We tried several times in the 2000s

to get USDA support at a fraction of the cost that USDA was spending on Dairy & Beef EPDDs or their support for quantitative genetics in the poultry and pork industries.

2) In 2009, Dave did a Herculean effort to convert all the NSIP data from all breeds into a format so that NSIP could transition to LambPlan. By 2010, most of the transition was done. Dave Notter continued to support the transition and help the USA sheep to better use our access the benefits of LambPlan until Ron Lewis became the NSIP Technical advisor.

a. Australia had invested in a software and internet submission that allowed a sheep flock to run data 2x/month. This 2x/month run, greatly improved the value of NSIP for the USA Sheep Industry.

A few other notes:

1) All the efforts above that impacted Katahdins involved Katahdin breeders collecting data & DNA, data being partially organized by a Katahdin breeder. Take home is that he worked with Katahdin breeders.

a. Dave Notter, Joan Burke and Ron Lewis have always said that there is a a grop of Katahdin breeders that will provide the data they need at a time in which USDA provides less monies for sheep research than for other livestock industries.

2) Almost all of the work, involved ideas suggested by Katahdin breeders for tools and information we could use.

3) Dave Notter's early work with the Katahdins, especially in the early 2000s helped give legitimacy to Katahdins in the whole sheep industry.



FINDER

KATAHDINS and MAREMMAS



Spring lambs are looking good! We'll have ram and ewe lambs available after weaning.

WARREN & PAM FINDER

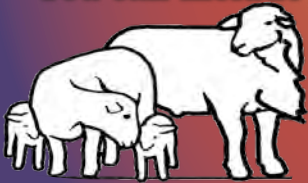
14715 W. Maple Grove Rd., Kingman, KS 67068 • 620-532-1327 • finderhampshires@gmail.com

OPPORTUNITY TO DONATE TO KATAHDIN YOUTH PROGRAMS

Donations are voluntary. With help from member donations of \$50 or more, KHSI has been able to support several youth programs the past several years. Please donate to the youth activity of your choosing:

- Youth Scholarship Fund
- All American Junior Show (AAJS)
- Youth Show fund (covers Kennedy Family National Katahdin Junior Show and a few select regional youth shows, including Leroy Boyd Show, Midwest Junior Preview and Big E).

You can include your donations in your dues check. Please designate which fund(s) you want your donation to cover.



Contact KHSI Operations in Fowlerville, MI for more information if you have questions about donation opportunities.



Sturdy Post
RANCH

JUSTIN & CRISSA FRUECHTE · WARD, SD
605-690-3309 · www.sturdypostranch.com

Upcoming
SALES:

- May 2 · Online Fall Born Sale
- June 1 · Bred For Balance Online Production Sale
- Both online sales through **PLACTIONS.LIVE**
- May 12 · Ohio Showcase Sale
- June 17 · Midwest Stud Ram Sale

Bottom photo: Left ewe sells in Fall Born Online Sale, middle ewe in Ohio Showcase Sale, right ewe in Sedalia

STURDY POST RANCH

The advertisement features a collage of photos showing various sheep and goats in a barn setting. A small logo for Sturdy Post Ranch is also visible.

KHSI Membership Donations to Support Youth Activities

63 KHSI members have donated a total of \$3364 to support this year's KHSI Youth Activities. These include the following:

- All American Junior Sheep Show
- Katahdin Youth Sheep Show
- KHSI Youth Scholarship fund

Please say thanks to the following contributors!

2MarAcres
Arkansaw Road Katahdins
Aslin Katahdin
B&B Diamond Farms LLC
Behl Farm
Black Locust Katahdins
Brushy Mountain Ranch

Burbrink Katahdins
Breezy Knoll Katahdins
Byrns Ranch
Cedar Hill Farm
Corn Creek Katahdins
Country Oak Ranch
Cumberland Mtn Katahdins

Curran Farm
D & J Smith Katahdins
Dyer Family Katahdins
EBH Plantation
Ewe Lamb Right Farm LLC
Fahrmeier Katahdins
Fief Family Farm
Five Points Farm
Francis Family Farms
G-5 Farm/DHG Katahdin



CONTINUED ON PAGE 41



All rams RR JDK

DYER FAMILY KATAHDINS
Chrisney, IN
812-457-0320

Striving to Raise Superior Katahdins

John, Judy & Scott Dyer jdkatahdins@Reagan.com

Another addition to the flock: SHU 4630, a Hercules daughter

We have a couple fall Bingo ram lambs ram lambs available. GIVE ME A SHOUT and Come By and Look at them.

HALL
John Hall - Chestertown, MD • 410-708-8781
hallclublambs@gmail.com • johnhallclublambs.com

Round Mountain Katahdins

23 years using EBVs, — 25 years of data

PERFORMANCE SELECTION ON PASTURE

Selecting stock with balanced GEBVs, superior Lbs Lamb Weaned and Parasite Resistance

Jim Morgan & Teresa Maurer
NW Arkansas • 479-236-9569 • jlmm@earthlink.net

Georgie's Farm, LLC
 Gleaves Farm
 Haskins Farm
 Happy Hills Genetics
 Harrogate West
 Hensing's Hilltop Acres
 Humphrey, Osborne, Warren Farms
 Hymel Farms
 Kalvar Farms
 Kevin Stewart Katahdins
 Laudan Acres
 Legacy Farm
 Luzon Farm
 McKinzie Farms
 Mills Valley Katahdins
 Misty Meadow Farm
 Misty Oaks Farm
 Mullet Katahdins

Aiden & Anna Murphy
 Peace of Eden Farm
 Pine Drive Farm
 Poynter Sheep Farm
 Quarter Penny Farms
 Rabbit Run Farm
 Rancho Azul
 Rybrid Farm
 Round House Farm
 Round Mountain Katahdins
 Rowdy Mountain Farm
 S&R Farms
 Sexton Farm Katahdins
 Smohalla Acres
 Sonlight Ridge Farm
 The Farm at Windy Hill
 Thomas Family Homestead
 Thousand Oaks Ranch

Two Moons Farm
 Kevin & Jackie Townsend
 Two Mothers Farm
 W Hudson Weisend
 Windswept Crest Sheep Farm




GRP

PETTIG LIVESTOCK

100% PASTURE BORN, FED, AND RAISED COMMERCIAL LAMBS AVAILABLE JUNE 2023

REGISTERED LAMBS ARRIVED IN FEBRUARY & WILL BE AVAILABLE IN OUR ONLINE SALE JUNE 2023

HOSTED BY INTEGRITY



Join us on Facebook: Pettig Livestock

GEORGE AND JERI PETTIG
 214 OAK STREET • NEW BLOOMFIELD, MO 65063
 PHONE: 636-578-0847 • EMAIL: GRPETTIG@GMAIL.COM

WHITMER KATAHDIN FARM

ESTABLISHED 2005



Taking Orders for Spring Crop

816-244-2572

4840 SW St., Rt. O
 Stewartsville, MO

GET ON THE LIST FOR OUR 2023 LAMBS



Farm on the Hill

Harleysville, PA • 215-896-6942 • cyoder78@gmail.com



Flock Sires



STU K792



FFG 750



STU K736



COR 22-24



PDL 1905

(606)271-1812

kevinstewart@reagan.com



Find us on Facebook

We will have a nice set of lambs available sired by 5 elite Katahdins acquired from flocks across the USA.

Whether you are looking for ram lambs, ewe lambs, or replacement ewes we will have something to meet your needs in 2023. Come visit us on the farm or find us at the Midwest Stud Ram Sale in Sedalia, MO, KHSI Expo in Van Wert, OH, and other summer sales. We are also consigning to "The Rock 1st Annual Production Katahdin Sale" on June 6th. Follow us or the sale page on Facebook for information on our consignments.

www.kevinstewartkatahdins.com

THE ROCK

1st Annual
Production
Katahdin

SALE

JUNE 6, 2023

FEATURING SOME OF THE HOTTEST GENETICS IN THE KATAHDIN BREED FROM:

LASWELL FARMS
KEVIN STEWART KATAHDINS
REYNOLDS BEE LICK FARMS

[HTTPS://PLACTIONS.LIVE/AUKTION/19432](https://plauctions.live/auktion/19432)

Here's How I Do It: "Death Loss"

by Dan Turner

I usually do a bit about the different types of systems that we use around the farm, but this article will be a bit different. I am going to venture into what I perceive as the taboo topic about the big D. It happens to every sheep farmer, except that one Facebook poster who says they haven't seen it and they've been raising sheep for 4 years. Well, good for them, but D day will come.

You can call it "lamb loss", "flock shrinkage", "lamb mortality", "lost a ewe" or just plain "Death". Or you can soften a bit by calling it "death loss", which I appreciate, as it pretty much says, "its gone, cause it died". I say that I perceive this as a taboo topic, as there seems to be very little personal discussion about this in a public forum. Yeah, you see FB posts about some gory stuff, but your not sitting in sessions where you gain comfort by knowing that others suffer some terrible losses, just like you may have experienced. Often I am sure that new shepherds wonder if anyone else ever had it this bad.

I was at an educational session where a person asked the question about their death loss and whether they were normal. The presenter quickly glossed over the question and pretty much ignored the question from what I heard. I realized then that I should bring this up some time and discuss it straight on. It feels like one reason to keep it to ourselves and under wraps is so we can sell more of these wonderful, "perfect" sheep. But they ain't perfect, and nor are we. This article will address a bit about the imperfect sheep, but I really want to bring out the mistakes made by the "imperfect we". Those mistakes that will make you cry, make you blame yourself, and may haunt you for a long time. If we can put it into proper perspective, we won't be haunted, but we will remember and be better educated from the experience.

It is hard to know where to start talking about death; almost like Shakespeare, "...let me count the ways". National statistics, across all breeds, show that nearly 10% of a lamb

crop perish early, and most before 7 days old. I've read that most lambs die from starvation. This is most likely not the case in smaller flocks where all lambs can be monitored every day and tubed or bottle fed. I don't want to get into the mechanics of tubing here, but I will say that I've heard that tubing is one of the greatest inventions to keep lambs alive. When we have a lamb that is identified as "at risk", we will try to get it to suck from a bottle, and tube it if it won't, then paint a bright red dot on its back. It is easy to spot in the crowd over the next few days and may need supplemented until you can no longer catch it. Sometimes 2 days and it is back nursing full time.

Obviously if we feel a newborn is not up to speed, we use colostrum; either store bought powder or frozen from what a ewe donated, and almost always this is tubed. Maybe from a ewe that had a still born (nice words for dead at birth (DAB)), or from a

CONTINUED ON PAGE 44

Benchmarked performance on grass.*
**Now with genomic-enhanced EBVs!*
www.canfieldfarms.com

Hair Sheep Maternal Index Progress

Year	Katahdin Average	Canfield 640075 Average
2013	101.1	101.2
2014	101.2	101.3
2015	101.3	101.8
2016	101.4	101.6
2017	101.5	101.8
2018	101.6	102.1
2019	101.8	102.6
2020	101.9	102.7
2021	102.0	102.6
2022	102.3	103.1

Logos: NSIP Maternal Certified, NSIP Stud Certified, SHEEP GEMS, GENOMIC ENHANCED EBVs, NSIP National Sheep Improvement PROGRAM

huge uttered ewe with a single or smaller twins. We freeze it flat in plastic Ziplocs. And if the lambs were just born, always watch for and remove the placenta, as sure enough, a lamb can be strangled by it.

Other things, like allowing a lamb to sneak out of a lambing jug and wander off may lead to death. Make sure the lambing jugs are escape-proof. However, this year we put a ewe with a nice single in a headgate so we could graft another lamb (whose mother died from severe mastitis which we found after her one triplet died of starvation) onto her. After the second night, I found the ewe had laid down on top of her own lamb and suffocated it. Looking at the pen, I realized that the side walls of the jug should have been slanted away from the head gate, allowing ample room for the lambs to get away from the ewe. Instead, the lamb couldn't escape and got pinched between the ewe and panel with no way out. That one still bothers me.

As the lambs get a few days old,

watch out for watery mouth, and learn to identify and treat it. This is frustrating, as they may look fairly fine, but are on the path to the flock in the sky. They can be saved if you have the right meds and it is caught in time, but I've not won that battle yet. Another killer that can affect the young lambs is anything that can fall on them - including the hay racks in the lambing jugs. We now use zip-ties to keep the ewes from unhooking the hay racks when they rub against them. And for Pete's sake, do not leave any panels leaning against a wall where a ewe can get between them and knock the panels over onto lambs... another one bites the dust. Tie all panels up if they must stay in the pen, but the best thing is to remove them or hang them up high.

Keep the bedding clean with good circulation or pneumonia may start to creep in. Be aware that there is a pneumonia vaccine, which seems to have mixed reviews, as how do you know if it really works? Not sure, but it is likely worth the investment. At a

certain age the lambs may start to get coccidiosis, which is just plain ugly. We used to think we were getting killed by worms, but found treating for worms was the wrong thing. We now get Deccox in our pellets that get fed to the ewes and then lambs through the creep feed. We've had some serious flock shrinkage in the past with pneumonia and coccidiosis.

As the lambs begin to grow there are other perils. Any place they can stick their head, they just might. They may flip over or break their neck trying to get free, and you will find them later as a shockwave of terror runs through your entire body. Yeah, they can be creative as to how they do it. I've twice had hay feeders in the field blow over and kill lambs. I took the well-intentioned roofs off so they don't get caught in the wind.

In the beginning we were using woven field fence for corrals and chutes. Great, low-cost - until a nice lamb gets its leg caught and broken,

CONTINUED ON PAGE 46



Round Mountain Consulting

Jim Morgan

Round Mountain Consulting Can Help You With:

- Understanding how to use EBVs
 - o set and achieve flock goals
 - o purchase rams
 - o select replacement ewes
- Submitting data to NSIP
 - o organize data
 - o learn to use Pedigree Master
 - o submit data
 - o help those without computers or internet access

Why Round Mountain Consulting?

- 20+ years one-on-one consulting experience
- Served 20 years on NSIP Board & 10 years as President
- 20 plus years' experience consulting & serving Katahdin breeders

FREE FIRST HOUR of consulting to determine if:

- EBVs work for your flock
- Round Mountain Consulting will help achieve your goals

Jim Morgan
479-236-9569 • jlmm@earthlink.net

BMB 2204R MOMENTUM!



BMB 2204R
**2022 NAILE
RESERVE GRAND
CHAMPION RAM**

**STUD RAM at
BURBRINK SHOW
STOCK**
**Shown in his working
clothes, we have a
SUPER SET of lambs
out of him!**

"CRYSTAL" **BMB 2207**
Crowd Favorite Feb Ewe Lamb
Sold to Riviera Katahdins at MWSRS

**We will be attending the
Ohio Showcase Sale and
the Midwest Stud Ram Sale**



**Brayden &
Justin Burbrink**
Brayden Cell: 812-371-7249
Justin Cell: 812-498-4890
burbrinkshowstock@gmail.com
www.burbrinkfamilyfarms.com



THANK YOU to all our 2022 buyers for trusting in our genetics!

and now it is my job to inflict the big D on the lamb if it is not going to heal well. Another time I've had to do that was when a new lamb just wasn't looking good, but he was plenty fat. When I went to give him an enema, I realized he didn't have a butt hole. Obviously, this didn't end well that evening.

A family member's dog got into the field... 7 lambs gone. A coyote was wandering through the area several years ago... unknown lambs gone. So we put up nice fencing with a good hot wire around the top to keep our lambs safe. We also put up netting to rotationally graze. The neighbor goes down the road on his Harley and I find 2 dead lambs in the morning... stuck in the electro-netting. We now use only poly wire along the roads where animals get spooked and try to never use netting on lambs. I had a ewe jump the netting - well almost. It snared her leg and sure enough, there she was the next day, no longer struggling.

The mature animals are the heartiest

by far, but they are not exempt to an early demise. The ewes are most vulnerable at lambing time. I had a vet pull a lamb "head back" and got a 2fer, as she killed the lamb and the ewe. I was new at it and now realize that shepherds often know more than vets about certain tasks and should step in when it is appropriate. And we've lost a few ewes to hypocalcemia and pregnancy toxemia. The key there is to recognize it early. Walk through the flock on a regular basis and make everyone get up and move. If in doubt, treat for both. And not just ewes, but we've had older rams blow out a hip or shoulder during breeding season. For this reason, have a backup ram ready.

I've also had my share of casualties from feeders - which is the most ironic. We use "tote cages" for cheap hay feeders. They worked great until a ewe decided to stick her head in the same opening as another ewe. It wasn't long until the bottom ewe suffocated. I now cut the third band from the top off of every cage and

am considering the bottom one as well. Another sheep-killing feeder are some lick feeders that I have. The first wave of mortality was due to a feed limiting bar being installed upside down by one of my helpers who cleaned them every day. This is an easy mistake to make and allowed free choice for a flock of ewes. Bloat took out 6 of them. The same feeders were used for a lamb creep situation where they were allowed to go empty. When they were refilled, the rams stuck their heads in to eat, other ram lambs piled in, tripping over each other, and snapping necks. Over half a dozen self-limited. (Hint: never let creep feeders go empty)

Since I can't take up the whole magazine, I'll end my tales of expiration and answer the question, "now what". Every time there is a death, there is the question of, "what do I do with it". Well, it all depends, and sometimes it takes a bit of preplanning. For instance, take the

CONTINUED ON PAGE 47

THE STUD RAMS

at Happy Hills Genetics



RIV 902 (818) Power Play



and making excellent mothers. His sons are big framed, fast growers. The ewe lamb pictured is the first Power Play to sell at public auction selected by Amilia Lillehaugen at the 2022 Expo National Sale.

I told Mike Nelsh I needed a ram to sire frame and extended front ends. Power Play is the ram he suggested and we are really pleased with his progeny! First daughters are now in production

In starting our flock a few years ago, we were fortunate to acquire a really top set of ewe lambs from David & Jane Smith, David Redwine, and Jay Greenstone.

Last year we decided to add some color to the flock and purchased Great Northern at the 2022 Expo from the Lillehaugen family. Pictured is a Great Northern ewe lamb out of a Power Play dam. Lots of color, big bone, thick tops in the Great Northern lambs!



Lillehaugen 22068
Great Northern



**Watch for the progeny of these two leading sires
at the 2023 Expo National Sale, Van Wert, Ohio**

Mike and Hilda Jones, 19120 GA Hwy 219, West Point, GA 31833
706-773-3612 • mikejonesauctioneer@gmail.com

youngster this week that showed me what a rectal prolapse looks like (ok, so I lied – but just one more). I could have given her some pain medication, but I had an idea of where this would end, and that was in the freezer. So, what do we do with them?

The majority of our early demises go to the compost pile, as most are really small. We always have a big pile of organic material from bedding and such that we can use for composting. Google composting livestock if this is unknown to you. Do not throw them in your trash can. If they have certain medications or potential diseases, they must be buried deeply and properly in the compost. Sometimes we take them to the state lab for a necropsy and they dispose of them. The results of the necropsy can help us to learn why it died, but not always. Oh, and cut their tags off before burying.

We also eat some of our losses, but you must be prepared for this ahead of time. If you know why it died (suffocated in hay cage), then butchering is the right thing to do.

They were some awesome legs and racks I cut up this week, which got me pretty excited. The rams with blown joints and the ewes with severe internal bleeding are freezer candidates as well. Do it yourself or call up a friend or custom butcher. Make the most of this bad situation. If you are going to do it yourself, watch some YouTube videos or have a friend teach you. Have your supplies ready at all times, as you just never know when a sheep's tag # is up. Be cautious of the meat withdrawal times of any medications you gave the animal.

I don't want to be too negative here, and please be aware that we have had thousands of lambs and hopefully few people ever come

close to witnessing half of what I have. But when you have death, please be aware that you are not alone. When I sell sheep I often tell people that raising sheep is not perfect math. 1 plus 1 does not always equal 4. And remember, you can't count your lambs until they're on the trailer, and I've never had one die on the trailer...yet.



Thanks to the Purchasers of the "Hairald" Back Cover Advertising!

- Spring 23 – Babette Fief - CO
- Summer 23 – Meinders Stock Farms - IA
- Fall 23 – Fahrmeier Katahdins - MO
- Winter 24 – Ewe Lamb Right - PA

Luzon Farm

MARK YOUR CALENDARS!

ONLINE SALE MAY 23

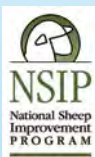
Integrity Livestock Sales
integritylivestocksales.com



Fall ewes targeted for online sale.



Join us on
Facebook:
[luzonfarm](https://www.facebook.com/luzonfarm)



Also consigning to the
Midwest Stud Ram Sale
and KHSI Expo.

Ed & Cindy DeOrnellis 573-291-0591 (c)
Keith & Megan Markway 573-291-4787
Bonnots Mill, MO

RMKA to Host 2 Events in 2023

By Babette Fief

The Rocky Mountain Katahdin Association is hosting two events in 2023. On June 3rd an educational meeting will be held in Albuquerque, NM. Then on June 8th and 9th our annual meeting will be held in Big Timber, Montana. Anyone is welcome to attend the meeting(s). Lunch is provided at both. The annual meeting will also include a private treaty ram and ewe sale. As more information on speakers and subjects becomes available it will be posted to our website and Facebook page. Anyone wishing to attend either event can register on the Rocky Mountain Katahdin Association website or by calling Babette at 719-468-0928 or Eleanor at 406-431-0184.

In 2022 we were hosted by University of Wyoming, Laramie's Drs. Whit Stewart and Cody Gifford who put on an excellent program for us. We learned carcass evaluation and latest trends for lamb retail cuts, we also did a blind taste test (hair sheep, most likely Katahdin, won). We learned results from a study on

mastitis and latest treatment options as well as touring the sheep barns and meat lab. Interesting that students in the meat lab have to come up with a recipe and some of the recipes go on to be featured in the American Lamb Board recipes. The five speakers had a lot for us to learn.

We learned about some of the sheep feed studies being done. Rocky Mountain Katahdin Association has agreed to provide Katahdin lambs for upcoming studies.

The RMKA board for 2023 consists of: Babette Fief, CO, president; Richard Blosser, CO, vice president Eleanor Molzahn, MT, secretary/ treasurer and at large board Mendes are Ray Norris, WY and Gary Holyoak, ID.

Make a Note

KHSI Operations
address:
P. O. Box 739
Fowlerville, MI 48836
717-335-8280 ext. 1
info@katahdins.org



**2023 Dr. Leroy Boyd
Katahdin Jr. Show**
Thursday, June 15 - Midwest Stud Ram Sale
Sedalia, MO
Judge: Skip Anderson

Focus on Ewe-thing



Watch for our online sale with
**Integrity
Livestock Sales**
Monday, June 5.

Fall rams like this one will be at our online sale and at the Midwest Sale.



Thanks to Salmon Run Farms for leasing us "Power Takeoff", Reserve Sr Champion at the NAILE in 2022. We look forward to seeing his fall lambs.

This 2022 junior ewe lamb from our show flock will sell as a yearling ewe at our online sale.



Some of these fall ewe lambs will be offered at our online sale and at the Midwest Sale



We will also be consigning to the Expo Sale, South Central, and Eastern Alliance Katahdin sales.

Please check out our website and Facebook page for new updates and pictures



Prairie Lane Farms
Katahdin Sheep



Member
NSIP

Henry Shultz & Family

6219 Audrain Road 125 • Centralia, MO 65240
573-682-7127 • www.prairielanefarm.net

Katahdin Recipe Forum Part 1

Citrus Honey Glazed Lamb Shanks

Recipe by the American Lamb Board
(<https://www.americanlamb.com/recipes-2/>)
Provided by Ful.Filled



INGREDIENTS

FOR THE LAMB SHANKS:

4 American lamb shanks
2 tablespoons olive oil
salt, to taste
fresh ground black pepper, to taste
8 cloves garlic
7 sprigs fresh rosemary

FOR THE CITRUS HONEY GLAZE:

juice of two oranges, about 1 cup
4 tbsp honey

DIRECTIONS

1. Pre-heat your oven to 425°F. Place the lamb shanks in a roasting pan just large enough to fit them in one layer and rub with olive oil. Season shanks generously with salt and pepper.
2. Roast for 20 minutes to achieve a nice brown color on the shanks. Remove roasting pan from the oven and turn the temperature down to 325°F. While you wait for the oven to cool down, scatter the garlic cloves and rosemary over and around the lamb.
3. Wrap the braising or roasting pan very tightly with several layers of heavy-duty aluminum foil and return to the oven.
4. Roast lamb shanks for an additional 2 hours. When the lamb is almost done roasting, mix the orange juice & honey until well combined. After 2 hours of roasting, remove the foil, spoon the citrus honey glaze over the shanks. Increase the heat to 400°F.
5. Roast shanks for another 15 minutes. Baste & rotate shanks, then roast for another 15 minutes. The lamb shanks are done when they are nicely browned and fork-tender. Note: USDA recommends an internal temperature of 145F with a 3 minute rest.
6. Transfer the lamb shanks to a serving platter and spoon over some of the juices, garlic cloves, and rosemary. Serve with roasted potatoes and a salad.

If you have a recipe that you and your family like, send it to KHSI Operations at info@katahdins.org or call 717-335-8280 ext 1.

We look forward to your recipes.

If your recipe is based on (or copied from) a published recipe, please provide the proper credit.

Katahdin Recipe Forum Part 2

Spiced Rack of American Lamb with Citrus Salad

Recipe by the American Lamb Board
(<https://www.americanlamb.com/recipes-2/>)
Provided by The Original Dish

INGREDIENTS

2 American racks of lamb (approximately 1 pound each)
2 teaspoons kosher salt, plus more as needed
2 teaspoons ground cumin
1 teaspoon ground coriander
1 teaspoon ground cardamom
½ teaspoon crushed red pepper
½ teaspoon freshly cracked black pepper, plus more as needed
6 tablespoons olive oil

2 blood oranges, peeled and segmented
1 orange, peeled and segmented
1 grapefruit, peeled and segmented
2 scallions, thinly sliced
8 mint leaves, torn
1 tablespoon white wine vinegar
1 tablespoon honey
1 cup greek yogurt
2 garlic cloves, grated
flaky sea salt (optional)

DIRECTIONS

For the Racks of Lamb: Preheat the oven to 450°F. Prepare a sheet pan with a baking rack on top. Place the lamb onto the rack, pat dry, and allow to sit at room temperature for 20 minutes. Meanwhile, combine the salt, cumin, coriander, cardamom, crushed red pepper, and black pepper in a small bowl. Add 2 tablespoons of the olive oil and stir to combine.

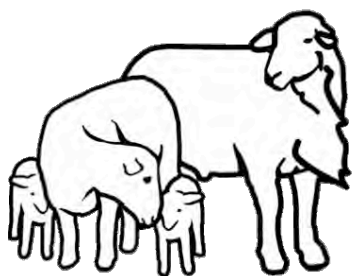
Rub the spice mixture onto the lamb, covering both sides of meat. With the bones facing down, roast the lamb for approximately 25 minutes (for medium), or until your desired doneness.

Remove the racks of lamb from the oven and transfer them to a cutting board. Loosely cover with foil and allow to rest for 10 minutes. Slice the racks between every two bones in order to create double chops. Plate the lamb with a drizzle of olive oil and flaky sea salt (optional) over top. Serve the citrus salad and yogurt sauce alongside (recipes below).

For the Citrus Salad: Combine the blood orange, orange, and grapefruit segments in a mixing bowl. Add the scallions, mint leaves, white wine vinegar, honey, and 2 tablespoons of olive oil. Stir well. Season with salt and pepper to taste.

For the Yogurt Sauce: Add the Greek yogurt, grated garlic, and remaining 2 tablespoons of olive to another bowl. Whisk to combine. Season with salt & pepper to taste.





Katahdin Hair Sheep International

“The Breed Whose Time Has Come”

KHSI Operations

P.O. Box 739 * Fowlerville, MI 48836
717-335-8280
info@katahdins.org

KHSI Registry

P.O. Box 231 * Wamego, KS 66547
785-456-8500
registry@katahdins.org

KHSI Member’s Guide

3/23

The Katahdin Hairald is the official publication of Katahdin Hair Sheep International, which provides education about:

- registering individual Katahdin sheep and recording performance
- maintaining the distinct identity of the Katahdin breed
- approaches to promotion and marketing
- summaries of research and development related to the breed

2022-2023 Board of Directors

President: Dan Turner, danturner44@gmail.com, 727-532-2435, Pennsylvania
 Vice President: Larry Weeks, lweeks9@gmail.com, 540-943-2346, Virginia
 Secretary: Mandy Fletcher, beyondblessedfarm@gmail.com, (276) 759-4718, Virginia
 Treasurer: Howard Covington, hscfarms@gmail.com, 936- 520-2689, Texas
 Director: Justin Fruechte, justinf@millbornseeds.com, (605) 690-3309, South Dakota
 Director: Karen Kenagy, krkenagy@hotmail.com, (503) 351-6978, Oregon
 Director: Cindy DeOrnellis, cad_luzon@hotmail.com, 573-291-0591, Missouri

Board Term

2020-2023
 2020-2023
 2021-2024
 2022-2025
 2022-2025
 2021-2024
 2020-2023

Honorary Members

Honorary Member: Dr. Charles Parker, cfparker@aglaia.net, Ohio
 Honorary Member: Laura Fortmeyer, jubilee@jbntelco.com, (225) 578-9684, Louisiana
 785-467-8041, Kansas
 Honorary Member: Dr. Ann Zajac, Virginia
 Honorary Member: James Morgan, jimm@earthlink.net, Honorary Member: Dr. Dave Notter, Virginia
 (479) 236-9569, Arkansas
 Honorary Member: Mark Dennis, Louisiana
 Honorary Member: Teresa Maurer, jimm@earthlink.net,
 (479) 236-9569, Arkansas

KHSI Operations:

Alan Culham, PO Box 739, Fowlerville, MI 48836, info@katahdins.org, 717-335-8280 ext. 1, 717-335-8279 (fax)
 Office Hours (Eastern time): Monday - Friday (9 am - 5 pm). Voicemail and email: available for messages 24 hours per day.

KHSI Registry:

Jeff Ebert, KHSI Registry, PO Box 231, 420A Lincoln St., Wamego, KS 66547
 Phone – 717-335-8280, ext. 3; Fax – 785-456-8599; Email – registry@katahdins.org

- Contact the Registry with questions about registration and transfer procedures.
- Send the following to the Registry:
 - completed forms for registering, recording, transferring and naming Katahdins
 - completed Membership Forms, Renewal Forms, Address Changes and Dues. Note: new memberships and renewals can be paid online using credit/debit cards at the KHSI website via PayPal.
 - Address changes or other corrections for print or web

Office Hours (Central time): Monday to Friday 8 am- 4:30 pm.

KHSI Committees: Call 717-335-8280, ext. 1 to volunteer; Committee Chairs listed with committee

Commercial Programs: Howard Covington, 936-520-2689 **Expo Sale:** Cindy DeOrnellis, 573-291-0591
Promotions: Robert Walker – 931-510-1322 **NSIP:** Michelle Canfield, 360-770-0615
Youth: Becky Shultz – 573-682-7127 **Show:** Cindy DeOrnellis, 573-291-0591
Expo Programs: Cindy DeOrnellis, 573-291-0591 **Video Hair Coat Inspections:** Howard Covington, 936-520-2689

Classified Ads

Classified Sheep Ads are limited and FREE to paid members of the KHSI. "Sheep Wanted" ads are free for all. Ads will be placed for 60 days, after which they will be removed. Ads may be resubmitted. All items for sale will be listed on this page in the order in which they are received. All additions, corrections, deletions to ads already placed must be made through the KHSI Operations Office.

WANTED TO BUY

3/27/2023 SW WASHINGTON

Looking for a Ram to breed to my Ewe. I currently have two related lambs a wether and an Ewe that are approximately 2 months old. I would like to grow a Ram next to my Ewe for breeding next year. I appreciate your time and I hope to hear from you soon.

1. Looking for 1 Ram that is 2-6 months old
2. I would like to purchase ASAP
3. I am willing to pick up anywhere within Oregon or Washington

3/8/2023 SW OREGON

Wanted- Group of Katahdin or Katahdin cross ewes/ewe lambs. Expanding our operation and looking for a good group of Pacific NW sheep. Looking for 50-250. Jesse Lee - Winston, OR. (406) 231-8456

3/2/2023 NE OHIO

Looking to expand our commercial hair sheep flock with 50-300+ open Katahdin or Katahdin-Cross ewes (open to any age), would prefer to purchase a minimum of 50 head from within 300 miles (if possible). If shipping in from farther areas, would like to purchase a truckload, if possible. Not looking for culls, or any ewes with wool in their close background. Prefer to pay a fair price for good ewes. Will consider bred animals, but would depend on pricing. Ideally we would love to purchase open ewe lambs that were born in Fall of 2022. RC LIVESTOCK, LLC - Wooster, Ohio (330) 749-7793 jrams925@yahoo.com

NEED TO SELL SHEEP?

PLACE A FREE Sheep for Sale ad at <https://katahdins.org> or contact Alan at 717-335-8280 ext. 1 or info@katahdins.org

WANTED TO BUY

1/31/2023 NW NEW YORK

Looking for a RAM for my flock. Must be registered, RR, Tmem154 4,4 or 1,1, 1,4, with current negative results for OPP, Johnes, and brucellosis. From a health-tested flock with no CL, foot rot, ORF, lice, or mastitis. Must be calm, easy-to-handle, gentle with ewes and lambs, slick-shedding, polled, good teeth, solid feet, and have a flat top line. Big and fast-growing (minimum 90 lbs at 90 days on grass; 120/120 would be ideal), mature weight 300-350 lbs, and likes to eat. Grass-only flock preferred, but some grain or pellet supplement is acceptable as long as he has not been pushed hard. Color unimportant, age flexible as long as capable of breeding 20-30 ewes. Longevity, health, growth on pasture, parasite resistance, and good maternal milk are key factors. Will travel to pick up the right boy. Can wait a year if you are still using him, or pick up immediately. Budget corresponds to demands. This could be a perfect retirement situation for an older ram to live out his life in a pastured flock, but I won't dismiss a quality yearling either. Thank you! TIM Farms - Spencerport, NY (585) 694-0337, jktczh@me.com

SHEEP FOR SALE

3/28/2023 NW NEW YORK

Katahdin Ram Lamb for sale. Ram was born July 4, 2022. Totally pasture raised. Sire and Dam on site. Transportation negotiable at time of sale. \$700.00 not registered or \$750.00 registered on the Katahdin International Sheep Organization. BY THE SEAT OF OUR PANTS HOME-STEAD - Hamlin, NY (585) 255-0702 lamellors@gmail.com

Drive Safely -
See you at Sedalia

SHEEP FOR SALE

3/27/2023 NW IOWA

14 Katahdin lambs are available! All are twins or triplets! All of our lambs are purebred and come from a registered sire and registered dams from Sibley and Milford, IA. They have fantastic genetics! Ewe lambs are 325/head or 350/head if you want them registered. We have 8 available! White Ram lambs are 400/head or 425/head if you want them registered (The cost is more for unique colors and patterns). We have 6 available at this time. 3 white, 2 black, and 1 badger! Lambs will be weaned at 8 weeks and ready to go mid-May! Located in Ocheyedon, IA. Please email me at lorcherin@gmail.com with your questions. I'd be happy to share pics, weights, etc. Lorch Lambs (773) 332-9587

3/27/2023 NE COLORADO

2 year old registered ram. He comes from a great bloodline and is RR. Only feed grass and alfalfa. His offspring have come in 13lbs or above. Have pictures and generation pedigree information. Asking Price \$600.00 obo. Ram lamb born January 24, 2023. Will be weaned and registered May 25, 2023, afterward he will be ready for his new home. He is an RR. Have pictures and will have generation pedigree information after May 25, 2023. Was NOT bottle feed, mother given only grass and alfalfa. Asking Price \$450.00 obo. 2 year old registered ewe. Part of her bloodline is Red Haute and Southern Meat. She has lambed a very healthy single ewe. She is a great mother. Her lamb will be weaned May 31, 2023. After her lamb is weaned she can go to her new home. Have pictures and generation pedigree information. Asking price \$300.00 obo. LK Ranch - Lochbuie, CO (720) 296-1406 cheryl.preisser@yahoo.com

CONTINUED ON PAGE 54

Classified Ads, continued from page 53

SHEEP FOR SALE

3/23/2023 W OHIO

Registerable Katahdin Ewe Lambs for sale. Born late December-March. Out of Misty Oak ram with NSIP data. They are from a grass fed only operation with selective deworming methods. All lambs are scrapie genotype RR and out of excellent mothers with good maternal instincts. These ewe lambs will make foundational ewes for your new herd or additions to your current one. Lambs are tame and handled often. They are brown and mainly white lambs. Ewe lambs \$500 each. Also, I have ram lambs for sale as well starting at \$400. Ready to be weaned and go to their new home April-June. Pictures are available upon request. Leave a message with your name and number. Rebekah Evans-Heaven's Sunshine Acres-Rossburg, Ohio. Contact info: RebekahAnna@icloud.com or 937-569-9174 (Naomi)

3/15/2023 CENTRAL MISSOURI

KHSI RAM registered 100%, 300#+, strong parasite resistance, DOB: 12/23/2019 twin birth, Grass & grain fed, Hemi is a proven producer of singles, twins & triplets, giving good to high quality lambs at 120 days. Very good white coat with a few black sprinkles on lower legs & face, dark hooves, no wool fibers in coat & passes wool free coat to his lambs. We are a small operation & have decided to keep several of his daughters for replacement ewes. SIRE: 87379 COR 12-54 TW...DAM: 147109 JF 18038 TW. Located in central Missouri. Willing to meet for pick up within reasonable distance from Jefferson City, Missouri area. \$750 reasonable offers considered. Call/text (573)230-7308

3/13/2023 CENTRAL FLORIDA

10 registered Katahdin lambs for sale all born in January 5 Ewe lambs 5 Ram lambs. Some pure white, brown, and mixed colored. Hidden Oaks Farm Of Lake Mary - Lake Mary, Florida (407) 416-9106 admin@hiddenoaksfarmoflakemary.com webpage: <https://hiddenoaksfarmoflakemary.com>

SHEEP FOR SALE

3/13/2023 CENTRAL TENNESSEE

Commercial ram lamb for sale. His sire is a great ram from COR bloodlines and is registered. His dam is commercial ewe with very good maternal instincts and plenty of milk. This is her first lamb. This lamb is growing well and is very spunky. He is black and white splashed in color. He should throw lambs with good growth and maternal instincts and color. Text me for pictures. Shady Spring - Linden, Tennessee (423) 315-1698

3/13/2023 E OREGON

Registered Katahdin replacement ewe lambs and ram lambs are out of proven twins and triplet genetics. To best serve your needs, it's essential to reserve your breeding stock in advance. We have fancy whites and a variety of colors available. All lambs will be ready the second week of July. Ram lambs need to be spokes for by April 10th. A \$100.00 deposit is required and will be non refundable, unless we are unable to fulfill your order. If you have any questions or would like pictures, please let me know. Pine Creek Katahdins - Halfway, Oregon (541) 490-7553 pinecreekkatahdins@gmail.com <https://www.pinecreekkatahdins.com>

3/4/2023 E KANSAS

Several nice yearling rams for sale. Pastured operation; our studs are a Fortmeyer ram and a Jim Morgan ram. \$450. Lone Cottonwood Katahdin - Westphalia, KS. Call Wyan 785-893-2148.

2/22/2023 SW VIRGINIA

22 Commercial Fall Born Katahdin Ewe Lambs Available. Sires were purchased from the VT AREC Ram test in Glade Spring, VA. A deposit will hold lambs for two weeks. Photos available upon request. Please call or text Lisa at (276)780-3101 for more information. Shepherd's Way Farm, Glade Spring, VA

**Send all Operations mail to
PO Box 739
Fowlerville, MI 48836.**

SHEEP FOR SALE

2/21/2023 E KENTUCKY

Registered Yearling Ram for sale. Date of Birth 01/25/2022. 100% Katahdin. Parasite Resistant. Solid White with a good heavy frame. A Coat, Good feet, and never any issues with him. Easy Keeper. Sire 171383 SRG 0392 TW, Dam 171379 SRG 0387 TW. \$ 600, pick up at the farm. Pictures are available upon request. Registered 3-year-old Ram for sale. Date of Birth 03/11/2019. 100% Katahdin. Is Parasite resistant with an A Coat. Mostly White with dabbles of black all thru his coat, speckled black legs. Atlas has sired many lambs that are above average. Pictures are available upon request (you will not be disappointed). Sire 137995 RHS 137 TW, Dam 139407 JSF 173 TW. \$ 1000, pick up at the farm. We have never been disappointed with either of these ram's performances. We are selling because we bought a ram last year at the expo that we will be breeding to exclusively. MT. VIEW Katahdin - Irvine, KY We may be contacted by email: at keeneyk680@gmail.com or by text 859-582-6350.

2/10/2023 CENTRAL COLORADO

We have a registered 2 year old Ram that is coming in at 300lbs, for \$1,100.00 We also have a lamb ram for sale born 01/16/2023, for \$500.00. You will need to transport. Prices are negotiable. LK Ranch - Lochbuie, CO (720) 394-0016 cheryl.preisser@yahoo.com

CONTINUED ON PAGE 55

Send Registrations to:
Associated Registry
420A Lincoln Street
PO Box 231
Wamego, Kansas 66547
Phone: 785-456-8500
Fax: 785-456-8599
registry@katahdins.org

Classified Ads, continued from page 54

SHEEP FOR SALE

2/1/2023 E KENTUCKY

We are selling our herd Ram Stu this year. He is a beautiful 2.5 year old all white ram. Our farm is a 100% grass fed operation, and he is used to electric fences, and moving daily. He is very gentle and can be pet most days. He has provided our farm many great twins and the growth of his lambs has always surpassed the other rams we had on site. The only reason we are selling is because he is unable to mate with to high of percentage of ewes on our farm. Pictures available upon request, I can't see a place to upload on this site. We are asking \$1200. Genesis Family Farm - Olive Hill, KY (434) 282-7998 genesisfamilyfarm@gmail.com

1/30/2023 SW MICHIGAN

Five year old registered Katahdin ram BAG 3302. Percentage: 100.00. Codon 171:QR \$400.00 Greenfield Grazing - Buchanan, MI (269) 697-0063 efmacdonald92@gmail.com

1/30/2023 NW ARKANSAS

Ewe lambs and ram lambs born March 2023 for sale. Parasite resistant flock developed with the assistance of the University of Arkansas Parasitology Department for 20+ years. I have been a mixed animal veterinarian for 39 years, and have raised sheep for 35+ years. Ewe lambs and Ram lambs priced at \$600. If you are interested, please contact me early and a deposit will hold your lamb. Choice of lamb is dependent on date of deposit. Grass-fed in the Ozarks, Chevallier Ranch - Western Grove, AR (870) 577-2287 thedrisrealin@gmail.com

KATAHDIN PLUS EWES



KHSI
KAT
PLUS
ONLINE
REPLACEMENT EWE SALE

MAY 24TH 2023

PLA Approved Site

SHEEP EQUIPMENT

3/27/2023 WANTED TO BUY - NW TENNESSEE

We need to buy good used sheep equipment. Portable panels, lambing pens, working chute with head catch gate, elevated stand for hoof trimming, & portable round top sheep shelters. Please call me at 423-607-2529. Send pictures with prices to blessings1994@yahoo.com Circle of Blessings Sheep Farm. We live near Jonesborough Tennessee. Willing to make a road trip for the right equipment.

3/27/2023 FOR SALE - NE COLORADO

4 horse livestock trailer (used for our Katahdin sheep). Goose neck, 8,000lbs tandem axels, fully enclosed trailer with center dividers and center doors. Access doors on the outside of the trailer to the inside. It is all metal with no leaks, new tires, plenty of storage for hay and tack, clean title. Trailer was manufactured in Colorado and in good condition. Just needs paint. We have pictures. Asking price \$6,000.00 obo. LK Ranch - Lochbuie, CO (720) 296-1406 cheryl.preisser@yahoo.com

NEED TO SELL SHEEP?

PLACE A FREE Sheep for Sale ad

at
<https://katahdins.org>
or contact Alan at
717-335-8280 ext. 1
or
info@katahdins.org




2023 KHSI
Katahdin Expo & Sale
August 10th - 12th
Van Wert, OH



Send all Operations mail to:
PO Box 739
Fowlerville, MI 48836

Send Registrations to: Associated Registry
420A Lincoln Street • PO Box 231
Wamego, Kansas 66547
Phone: 785-456-8500 • Fax: 785-456-8599
registry@katahdins.org

Regional Katahdin Groups

COALFIELD	EAPK	RMKA
 Coalfield Hair Sheep Association	 Eastern Alliance for Production Katahdins	 Rocky Mountain Katahdin Association
<ul style="list-style-type: none"> The mission of the Coalfield Sheep Association is to provide shepherds the opportunity to share educational, marketing, operational ideas and to promote Katahdin hair sheep as a viable agricultural endeavor. 	<ul style="list-style-type: none"> A new group of Katahdin producers whose mission is to advance the development of production-oriented Katahdins using quantitative genetic selection. Open to all registered and commercial producers. 	<ul style="list-style-type: none"> RMKA is an agricultural non-profit organization dedicated to the promotion of the Katahdin Hair Sheep in the Rocky Mountain region.
contact: Seth Baker 276-219-0902 seth@sethbakerlaw.com Pete Odle 276-525-0727 Brad Mullins 276-926-4605 wmullins@vt.edu	https://easternalliancekatahdins.com contact: Brad Carothers 740-398-1279 oldslatefarm@gmail.com	 RockyMountainKatahdin Association https://rmka.org/ contact: Babette Fief 719-384-4000 babfief@yahoo.com
President – Seth Baker Vice Pres – Gilmer Childress Sec – Cindy Mullins Treasurer – Luke Mullins	President – Brad Carothers - OH Vice Pres – Tom Hodgman - ME Sec – Kathy Bielek - OH Treas – Roxanne Newton - GA	President – Babette Fief - CO Vice Pres – Richard Blosser - CO Sec-Treas– Dan Meister - CO
Meet Quarterly Next Meeting: Saturday, June 24, 2023	Annual Symposium & Sale: July 8, 2023, Morehead, KY	Educational Meeting: June 3, 2023, Albuquerque, NM Annual Meeting: June 8-9, 2023 Big Timber, MT
MOKATS	SCKA	
 Missouri Katahdin Breeders	 South Central Katahdin Association	
<ul style="list-style-type: none"> MOKATS online production sale TBA. 	<ul style="list-style-type: none"> Provide a marketing alliance for all members of SCKA Provide fellowship Assist breeders of Katahdin sheep in the sale & promotion of the breed Formed 1999 in New Iberia, LA 	NOTE: Pacific Coast Katahdin Sheep Association (PCKSA) is re-organizing. Contact Debra Blake, President, 503-467-8577 djkblake53@yahoo.com or Karen Kenagy 503-351-6978 krkenagy@hotmail.com .
https://www.facebook.com/groups/473747909310079/ contact: Becky Shultz 573-239-7553 beckyshultz@msn.com	http://hair-sheep.com/ contact: Jean Adams 337-515-4240 sckatreasurer@gmail.com	
President – Cindy DeOrnellis - MO Vice Pres – Clay Winder - MO Sec-Treas – Becky Shultz - MO	President – Jim Hill – MS Vice Pres – Darrell Adams - LA Treas – Jean Adams - LA Secretary – Clifford Spraberry - TX	
Next meeting: TBA	Annual Meeting: June 2-3, 2023, Vicksburg, MS	

Information about regional Katahdin groups is provided as a service. They are separate organizations from KHSI, provide great networking opportunities and require separate memberships.

Advertisers Index (listed alphabetically)

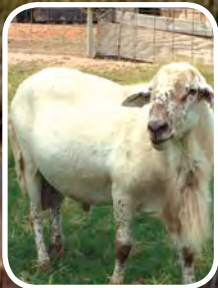
Block Katahdins, Bruce Block	25
Bluestem Farm, Art & Judy Sheridan, Texas	37
BoNus Angus Farm, Bob & Amanda Nusbaum, Wisconsin	6
Buckeye Acres, Ron & Carla Young, Ohio	11
Burbrink Show Stock, Brayden Burbrink, Indiana	45
Camp Creek Katahdins, Brant & Carrie Baringer, Kansas	30
Caney Creek Farms, Dwayne & Kathy Kieffer, Tennessee	37
Canfield Farms, Kirk & Michelle Canfield, Washington	43
Cedar Creek, Michael Stumpff, Tennessee	12
Circle L Ranch, James & Kay Lovelace, Missouri	32
Coalfield Sheep Association, Brad Mullins, Virginia	5
Croftland Farm, LLC, Maralyn Fowler, Wisconsin	48
Dyer Family Katahdins, John, Judy & Scott Dyer, Indiana	40
Eastern Alliance for Production Katahdins, Brad Corothers, Ohio	10
Ewe Lamb Right, Dan & Jan Turner, Pennsylvania	33
Fahrmeier Katahdins, Lynn & Donna Fahrmeier, Missouri	18
Farm on the Hill, Chad & Julie Yoder, Pennsylvania	41
Fief Family Farm, Sam & Babette Fief, Colorado	back cover
Finder's Katahdins & Maremmas, Warren & Pam Finder, Kansas	38
Fox Valley Katahdins, Kenneth & Lorelle Zimmerman, Iowa	3
Francis Family Farms Katahdins, Tony Francis, Missouri	22
Gingerich Family Katahdins, Joe & Silas Gingerich, Virginia	24
Hall Katahdins, John Hall, Maryland	40
Happy Hills Genetics, Mike & Hilda Jones, Georgia	46
JJ's Katahdin Sheep Farm, Jeff & Mary Gross, Iowa	17
Kevin Stewart Katahdins, Kevin Stewart	42
Keifer Sheep Farm, Chad & Elizabeth Keifer, Missouri	14
KRK Katahdins, Karen Kenagy, Oregon	13
Lauden Acres Katahdins, Marshall Koppenhaver, Pennsylvania	19
Lazy B Livestock, LLC, Howard II & Jennifer Brown, Oklahoma	6
Lillehaugen Farms, Luke & Maynard Lillehaugen, North Dakota	16
Luzon Farm, Ed & Cindy DeOrnellis, Missouri	47
Misty Oaks Farm, Jeff & Kathy Bielek, Ohio	15
Pettig Livestock, George & Jeri Pettig, Missouri	41
Phillips Family Farm, Becky & Ken Phillips, Pennsylvania	15
Prairie Lane Farm, Henry & Becky Shultz, Missouri	49
Rack of Lamb Corral, Todd & Renee Bauer, Kansas	36
Riviera, Mike & Leslie Nelsh, Ohio	35
Round Mountain Consulting, Jim Morgan & Teresa Maurer, Arkansas	44
Round Mountain Katahdins, Jim Morgan & Teresa Maurer, Arkansas	40
Ruiz Ranch, Allen & Aliana Ruiz, Georgia	9
Salmon Run Farms, Leslie Raber, Maine	27
Smohalla Acres, Timothy Rhodes, Ohio	15
Sturdy Post Ranch, Justin & Crissa Fruechte, South Dakota	39
Triple L Farm, Larry & Lisa Weeks, Maine	20
Ulry Farms LLC, Daniel & Marta Ulry, Onio	7
Waldoview Farm, Tom, Lindsay & Natalie Hodgman, Maine	31
West Fork Farms, Robert & Kim Walker, Tennessee	34
Whitmer Livestock Farm, Brian Whitmer, Missouri	41
Xpressions, Gail Hardy & Cheri Haire, New York & Maine	21
Zimmerman Farm, Stuart & Renee Zimmerman, Missouri	21



KHSI
 c/o KHSI Operations
 P. O. Box 739
 Fowlerville, MI 48836
 717-335-8280

Using great show genetics with high indexing genetics to bring Katahdins that thrive on semi arid, short grass prairie to the west for sustainable results

Our flocks are free of CL, OPP and Johnes. We test ALL adult sheep yearly



**POY 233
 "Dually"**

**Reserve Champion Ram
 at Midwest
 TMD 1525 "John Deere"**

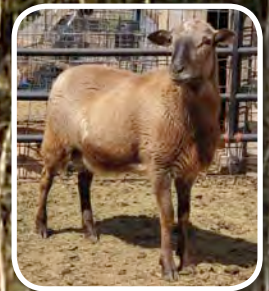


**COR 1514
 "Southern
 Meat"**



**Reserve Champion
 Ewe**

**PTK19042
 "Wapiti"**



FIEF FAMILY FARM

**Sam & Babette Fief
 La Junta, CO
 719-468-0928
 babfief@yahoo.com
 Member NSIP
 Innovation flock**

SIN COLITA KATAHDINS

**Estella Levy
 Canutillo, TX
 915-525-7426
 Ausiehound@aol.com**